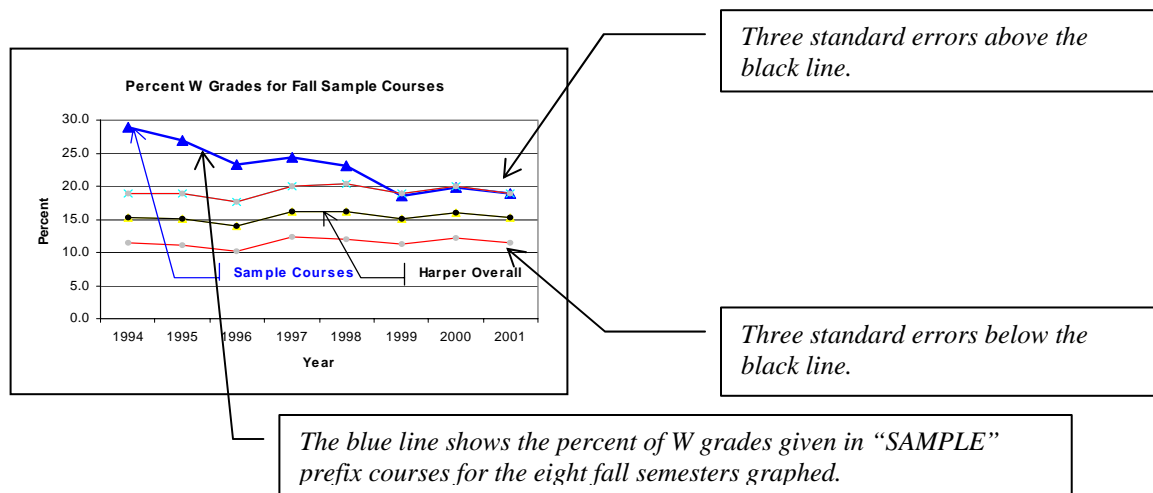


Semester Level Grade Distributions  
with Graphs for  
MTHLAB Prefix Courses

*Prepared by the Office of Research  
Teaming to Serve the Research Needs of the College  
November 21, 2007*

The page that follows provides grade distributions for the past ten summer, fall, and spring semesters, which contains six graphs showing the percent F and W grades awarded students taking courses with the specified prefix. Each grade graph has a black line representing the overall Harper percent of students (excluding AED courses) receiving that grade. Each grade graph also has two red lines representing three course prefix standard errors above and below the black line. The percent line for the specified prefix is blue. An annotated sample graph is provided below.

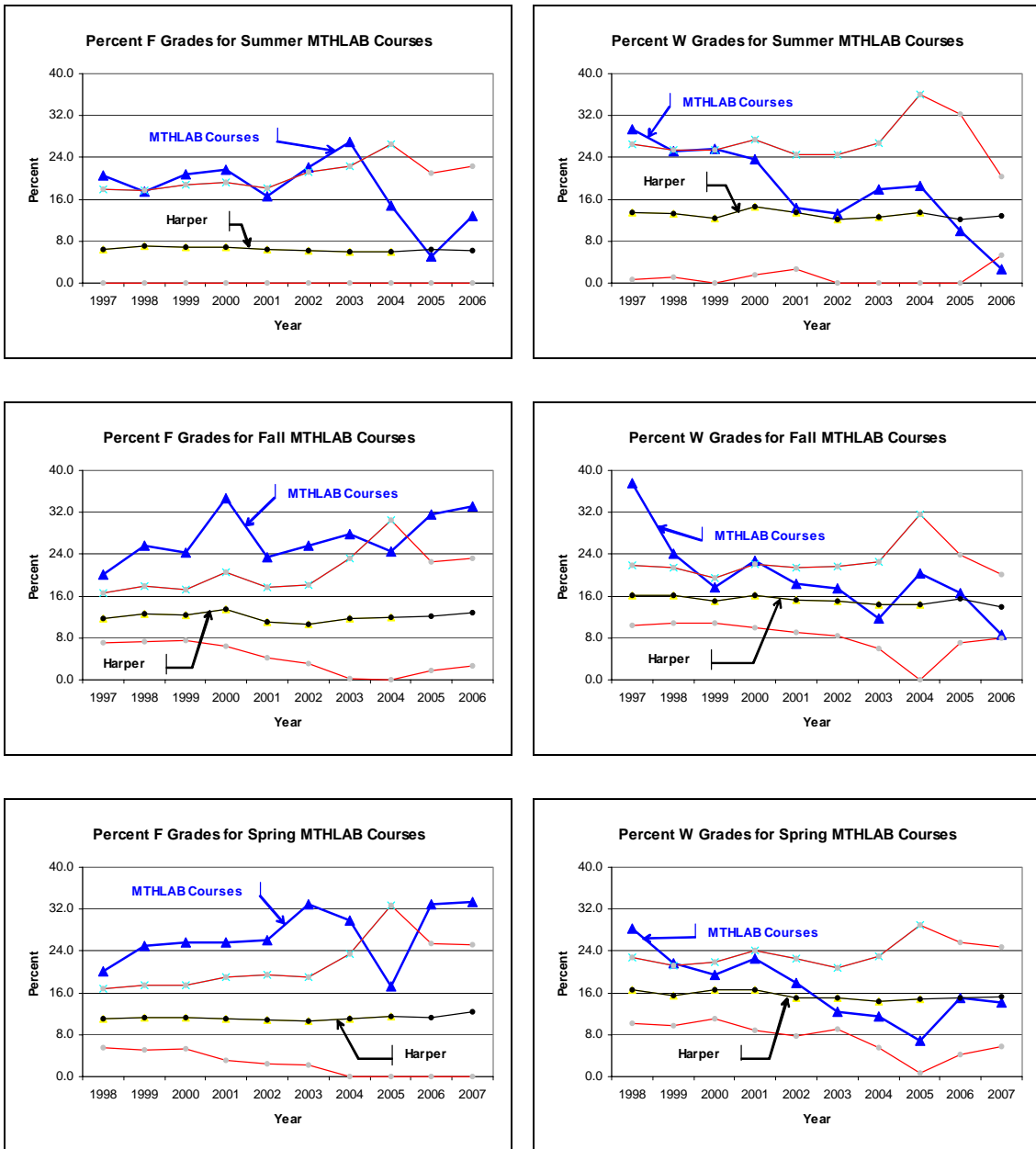


Generally, the blue line should stay between the two red lines with some points above the black line and some points below the black line. Blue points that are above the top red line represent percents that are significantly above the overall Harper percent ( $p < .01$ ). Similarly, blue points that are below the bottom red line represent percents that are significantly below the overall Harper percent ( $p < .01$ ).

If the graphs on the following pages show several “blue” points above the top red line or below the bottom red line, further investigation may be warranted. In the sample graph, most of the blue points are above the top red line. This indicates an excessive number of W’s were issued for courses with the “SAMPLE” prefix. When all the blue points are below the black line the percent is consistently on the low side; similarly, when all the blue points are above the black line the percent is consistently on the high side.

The last page includes tables giving the total number of all grades given for each year, the percent of each grade type (%A, %B, %C, %D, %F, %W) graphed and its standard error (SE), and another grade labeled “O.” O grades are other types of grades (audit, transfer credit, pass, incomplete, and so forth). Typically there are very few O grades.

## Grade Distributions for MTHLAB Prefix Courses by Semester



Total N of MTHLAB Students and Percent Earning Each Grade with Standard Error (SE)

Summer	N	%A	SE	%B	SE	%C	SE	%D	SE	%F	SE	%W	SE	%O	SE	%P	SE
1997	112	22.3	3.9	25.0	4.1	2.7	1.5	0.0	0.0	20.5	3.8	29.5	4.3	0.0	0.0	0.0	0.0
1998	115	31.3	4.3	24.3	4.0	1.7	1.2	0.0	0.0	17.4	3.5	25.2	4.0	0.0	0.0	0.0	0.0
1999	101	31.7	4.6	17.8	3.8	4.0	1.9	0.0	0.0	20.8	4.0	25.7	4.4	0.0	0.0	0.0	0.0
2000	97	21.6	4.2	24.7	4.4	7.2	2.6	1.0	1.0	21.6	4.2	23.7	4.3	0.0	0.0	0.0	0.0
2001	91	27.5	4.7	34.1	5.0	7.7	2.8	0.0	0.0	16.5	3.9	14.3	3.7	0.0	0.0	0.0	0.0
2002	68	23.5	5.1	32.4	5.7	8.8	3.4	0.0	0.0	22.1	5.0	13.2	4.1	0.0	0.0	0.0	0.0
2003	67	19.4	4.8	25.4	5.3	10.4	3.7	0.0	0.0	26.9	5.4	17.9	4.7	0.0	0.0	0.0	0.0
2004	27	51.9	9.6	14.8	6.8	0.0	0.0	0.0	0.0	14.8	6.8	18.5	7.5	0.0	0.0	0.0	0.0
2005	20	50.0	11.2	25.0	9.7	10.0	6.7	0.0	0.0	5.0	4.9	10.0	6.7	0.0	0.0	0.0	0.0
2006	39	28.2	7.2	48.7	8.0	7.7	4.3	0.0	0.0	12.8	5.4	2.6	2.5	0.0	0.0	0.0	0.0

Fall	N	%A	SE	%B	SE	%C	SE	%D	SE	%F	SE	%W	SE	%O	SE	%P	SE
1997	653	12.7	1.3	25.3	1.7	4.1	0.8	0.2	0.2	20.2	1.6	37.5	1.9	0.0	0.0	0.0	0.0
1998	591	17.3	1.6	28.3	1.9	4.9	0.9	0.0	0.0	25.5	1.8	24.0	1.8	0.0	0.0	0.0	0.0
1999	712	17.0	1.4	26.4	1.7	12.5	1.2	2.1	0.5	24.3	1.6	17.7	1.4	0.0	0.0	0.0	0.0
2000	418	15.1	1.7	22.5	2.0	5.0	1.1	0.0	0.0	34.7	2.3	22.7	2.0	0.0	0.0	0.0	0.0
2001	353	21.2	2.2	29.2	2.4	7.6	1.4	0.0	0.0	23.5	2.3	18.4	2.1	0.0	0.0	0.0	0.0
2002	303	19.8	2.3	30.7	2.6	5.9	1.4	0.0	0.0	25.7	2.5	17.5	2.2	0.3	0.3	0.0	0.0
2003	137	23.4	3.6	27.0	3.8	10.2	2.6	0.0	0.0	27.7	3.8	11.7	2.7	0.0	0.0	0.0	0.0
2004	49	4.1	2.8	40.8	7.0	10.2	4.3	0.0	0.0	24.5	6.1	20.4	5.8	0.0	0.0	0.0	0.0
2005	180	12.2	2.4	29.4	3.4	9.4	2.2	0.6	0.6	31.7	3.5	16.7	2.8	0.0	0.0	0.0	0.0
2006	187	11.8	2.4	35.8	3.5	10.7	2.3	0.0	0.0	33.2	3.4	8.6	2.0	0.0	0.0	0.0	0.0

Spring	N	%A	SE	%B	SE	%C	SE	%D	SE	%F	SE	%W	SE	%O	SE	%P	SE
1998	463	22.0	1.9	24.0	2.0	5.6	1.1	0.0	0.0	20.1	1.9	28.3	2.1	0.0	0.0	0.0	0.0
1999	448	19.6	1.9	27.0	2.1	6.7	1.2	0.0	0.0	25.0	2.0	21.7	1.9	0.0	0.0	0.0	0.0
2000	469	19.8	1.8	23.2	2.0	10.0	1.4	1.9	0.6	25.6	2.0	19.4	1.8	0.0	0.0	0.0	0.0
2001	270	14.1	2.1	30.4	2.8	7.4	1.6	0.0	0.0	25.6	2.7	22.6	2.5	0.0	0.0	0.0	0.0
2002	245	18.8	2.5	28.2	2.9	8.6	1.8	0.4	0.4	26.1	2.8	18.0	2.5	0.0	0.0	0.0	0.0
2003	282	19.9	2.4	27.3	2.7	7.4	1.6	0.0	0.0	33.0	2.8	12.4	2.0	0.0	0.0	0.0	0.0
2004	121	19.0	3.6	33.1	4.3	6.6	2.3	0.0	0.0	29.8	4.2	11.6	2.9	0.0	0.0	0.0	0.0
2005	29	27.6	8.3	27.6	8.3	20.7	7.5	0.0	0.0	17.2	7.0	6.9	4.7	0.0	0.0	0.0	0.0
2006	100	11.0	3.1	32.0	4.7	9.0	2.9	0.0	0.0	33.0	4.7	15.0	3.6	0.0	0.0	0.0	0.0
2007	120	14.2	3.2	29.2	4.1	9.2	2.6	0.0	0.0	33.3	4.3	14.2	3.2	0.0	0.0	0.0	0.0

\*Harper overall percent plus/minus three standard errors form the red lines on the graphs. MTHLAB percents within the red lines are not significantly different from the overall Harper percent at the .01 level of significance.