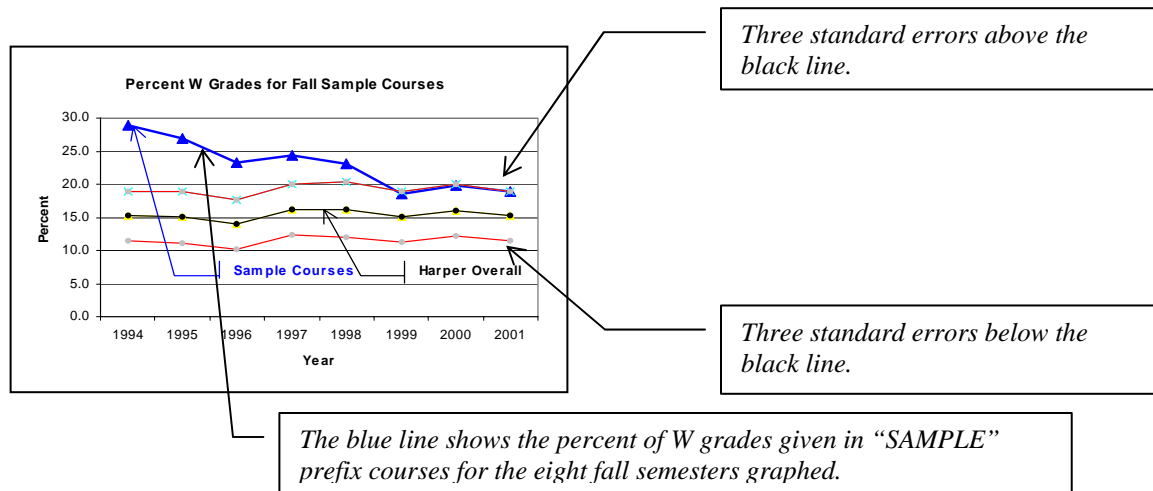


Semester Level Grade Distributions
with Graphs for
MTH Prefix Courses

*Prepared by the Office of Research
Teaming to Serve the Research Needs of the College
November 21, 2007*

The page that follows provides grade distributions for the past ten summer, fall, and spring semesters, which contains six graphs showing the percent F and W grades awarded students taking courses with the specified prefix. Each grade graph has a black line representing the overall Harper percent of students (excluding AED courses) receiving that grade. Each grade graph also has two red lines representing three course prefix standard errors above and below the black line. The percent line for the specified prefix is blue. An annotated sample graph is provided below.

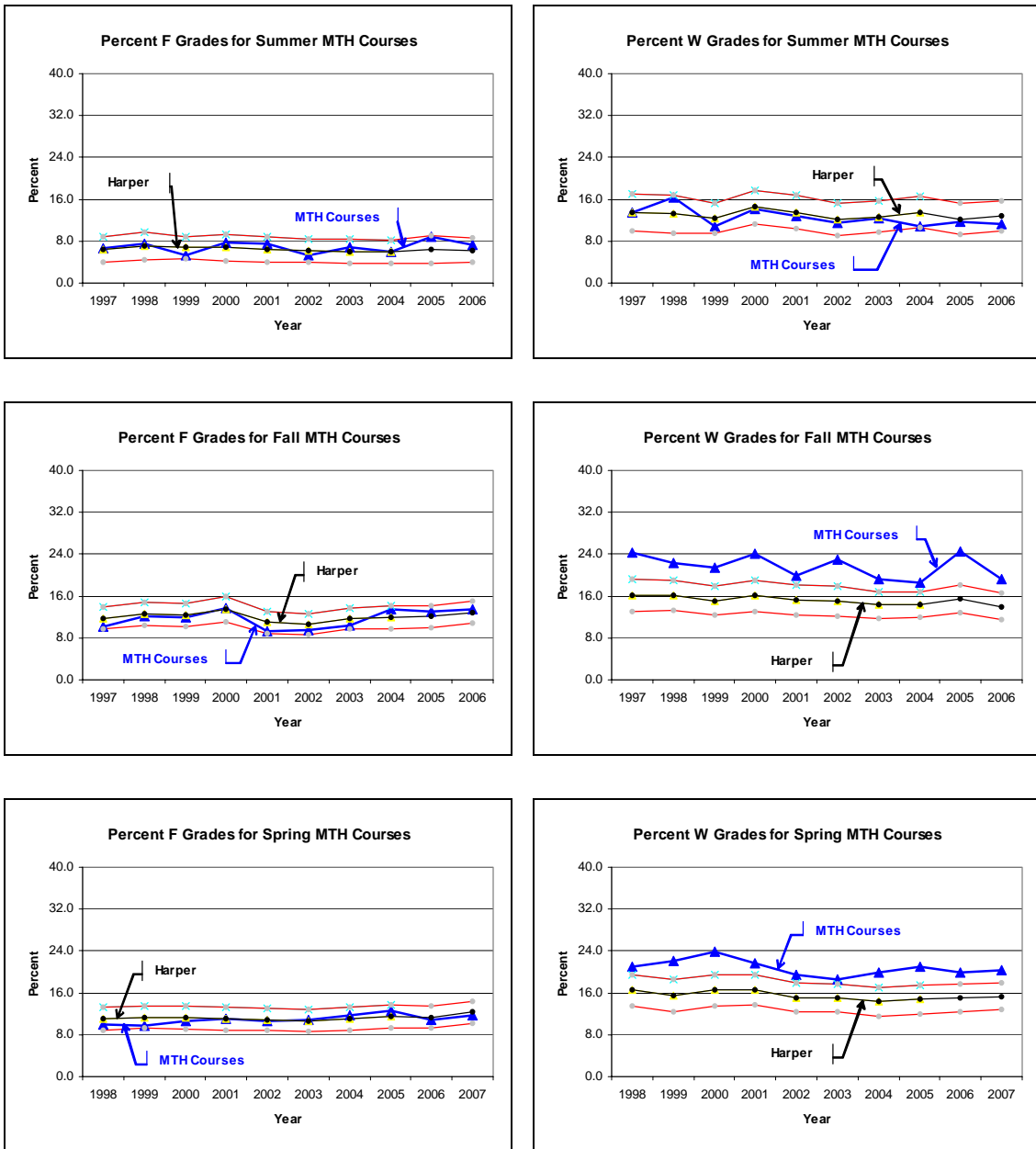


Generally, the blue line should stay between the two red lines with some points above the black line and some points below the black line. Blue points that are above the top red line represent percents that are significantly above the overall Harper percent ($p < .01$). Similarly, blue points that are below the bottom red line represent percents that are significantly below the overall Harper percent ($p < .01$).

If the graphs on the following pages show several “blue” points above the top red line or below the bottom red line, further investigation may be warranted. In the sample graph, most of the blue points are above the top red line. This indicates an excessive number of W’s were issued for courses with the “SAMPLE” prefix. When all the blue points are below the black line the percent is consistently on the low side; similarly, when all the blue points are above the black line the percent is consistently on the high side.

The last page includes tables giving the total number of all grades given for each year, the percent of each grade type (%A, %B, %C, %D, %F, %W) graphed and its standard error (SE), and another grade labeled “O.” O grades are other types of grades (audit, transfer credit, pass, incomplete, and so forth). Typically there are very few O grades.

Grade Distributions for MTH Prefix Courses by Semester



Total N of MTH Students and Percent Earning Each Grade with Standard Error (SE)

Summer	N	%A	SE	%B	SE	%C	SE	%D	SE	%F	SE	%W	SE	%O	SE	%P	SE
1997	884	19.7	1.3	26.2	1.5	26.6	1.5	7.4	0.9	6.6	0.8	13.6	1.2	0.0	0.0	0.0	0.0
1998	914	15.5	1.2	27.8	1.5	25.7	1.4	7.2	0.9	7.4	0.9	16.3	1.2	0.0	0.0	0.0	0.0
1999	981	21.6	1.3	30.0	1.5	25.5	1.4	6.6	0.8	5.4	0.7	10.8	1.0	0.1	0.1	0.0	0.0
2000	1023	22.1	1.3	24.5	1.3	20.9	1.3	10.4	1.0	7.7	0.8	14.2	1.1	0.2	0.1	0.0	0.0
2001	992	25.2	1.4	24.9	1.4	23.6	1.3	5.7	0.7	7.6	0.8	12.8	1.1	0.2	0.1	0.0	0.0
2002	961	24.1	1.4	27.6	1.4	23.4	1.4	7.8	0.9	5.3	0.7	11.6	1.0	0.2	0.1	0.0	0.0
2003	1079	22.3	1.3	27.6	1.4	22.9	1.3	7.7	0.8	7.0	0.8	12.3	1.0	0.2	0.1	0.0	0.0
2004	983	22.8	1.3	27.0	1.4	25.7	1.4	7.6	0.8	6.0	0.8	10.9	1.0	0.0	0.0	0.0	0.0
2005	1031	21.4	1.3	22.3	1.3	27.5	1.4	8.1	0.9	8.7	0.9	11.6	1.0	0.2	0.1	0.0	0.0
2006	1075	22.4	1.3	27.0	1.4	23.3	1.3	8.8	0.9	7.3	0.8	11.2	1.0	0.1	0.1	0.0	0.0

Fall	N	%A	SE	%B	SE	%C	SE	%D	SE	%F	SE	%W	SE	%O	SE	%P	SE
1997	1774	16.0	0.9	21.6	1.0	21.0	1.0	7.0	0.6	10.1	0.7	24.3	1.0	0.0	0.0	0.0	0.0
1998	1887	16.3	0.9	22.3	1.0	19.6	0.9	7.2	0.6	12.1	0.8	22.4	1.0	0.1	0.1	0.0	0.0
1999	1937	14.5	0.8	20.9	0.9	21.8	0.9	9.3	0.7	12.0	0.7	21.4	0.9	0.1	0.1	0.0	0.0
2000	1911	16.4	0.8	19.2	0.9	19.9	0.9	6.8	0.6	13.6	0.8	24.1	1.0	0.1	0.1	0.0	0.0
2001	1819	21.5	1.0	20.3	0.9	21.3	1.0	7.6	0.6	9.2	0.7	20.0	0.9	0.2	0.1	0.0	0.0
2002	1953	20.1	0.9	20.8	0.9	20.0	0.9	6.5	0.6	9.5	0.7	23.0	1.0	0.0	0.0	0.0	0.0
2003	2108	19.4	0.9	21.4	0.9	22.8	0.9	6.8	0.5	10.3	0.7	19.3	0.9	0.0	0.0	0.0	0.0
2004	2157	15.8	0.8	21.7	0.9	21.0	0.9	9.5	0.6	13.5	0.7	18.6	0.8	0.0	0.0	0.0	0.0
2005	2239	15.8	0.8	19.7	0.8	19.1	0.8	7.9	0.6	13.0	0.7	24.5	0.9	0.0	0.0	0.0	0.0
2006	2290	17.6	0.8	18.3	0.8	22.8	0.9	8.6	0.6	13.4	0.7	19.2	0.8	0.0	0.0	0.0	0.0

Spring	N	%A	SE	%B	SE	%C	SE	%D	SE	%F	SE	%W	SE	%O	SE	%P	SE
1998	1611	17.8	1.0	23.0	1.0	20.3	1.0	8.0	0.7	9.9	0.7	21.0	1.0	0.0	0.0	0.0	0.0
1999	1692	17.7	0.9	22.6	1.0	20.6	1.0	7.3	0.6	9.6	0.7	22.0	1.0	0.1	0.1	0.0	0.0
2000	1811	17.0	0.9	23.5	1.0	18.2	0.9	6.9	0.6	10.7	0.7	23.8	1.0	0.0	0.0	0.0	0.0
2001	1812	17.2	0.9	23.3	1.0	19.6	0.9	7.1	0.6	11.1	0.7	21.6	1.0	0.1	0.1	0.0	0.0
2002	1841	19.6	0.9	21.7	1.0	21.3	1.0	7.4	0.6	10.6	0.7	19.3	0.9	0.1	0.1	0.0	0.0
2003	1952	17.9	0.9	21.1	0.9	22.3	0.9	9.4	0.7	10.8	0.7	18.5	0.9	0.0	0.0	0.0	0.0
2004	1895	16.1	0.8	22.8	1.0	21.5	0.9	8.0	0.6	11.7	0.7	19.8	0.9	0.0	0.0	0.0	0.0
2005	1980	15.1	0.8	21.0	0.9	23.0	0.9	7.4	0.6	12.5	0.7	21.0	0.9	0.1	0.1	0.0	0.0
2006	2053	18.3	0.9	22.6	0.9	20.7	0.9	7.8	0.6	10.8	0.7	19.9	0.9	0.0	0.0	0.0	0.0
2007	2218	19.1	0.8	20.3	0.9	20.9	0.9	7.7	0.6	11.6	0.7	20.4	0.9	0.0	0.0	0.0	0.0

*Harper overall percent plus/minus three standard errors form the red lines on the graphs. MTH percents within the red lines are not significantly different from the overall Harper percent at the .01 level of significance.