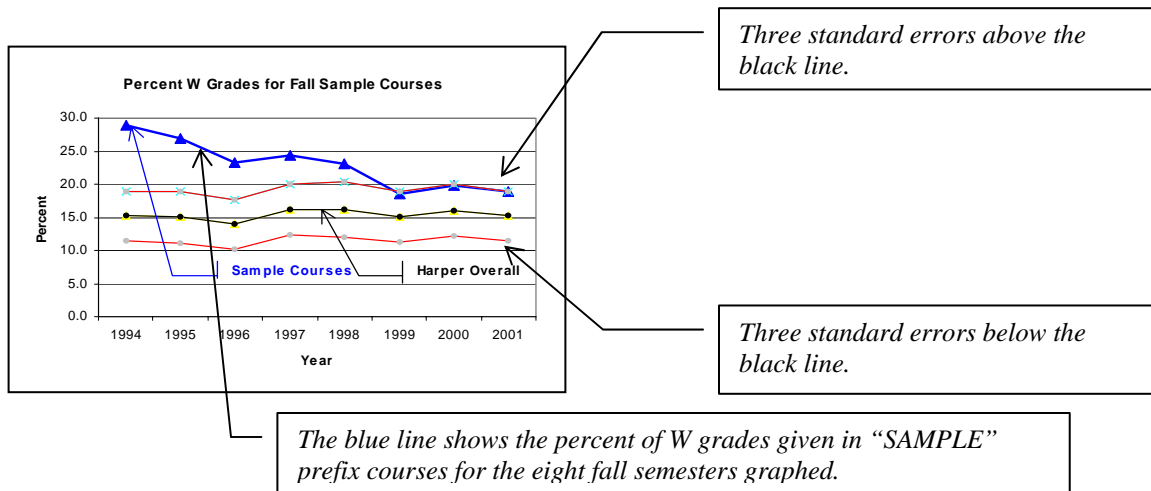


Semester Level Grade Distributions  
with Graphs for  
MGT Prefix Courses

*Prepared by the Office of Research  
Teaming to Serve the Research Needs of the College  
November 21, 2007*

The page that follows provides grade distributions for the past ten summer, fall, and spring semesters, which contains six graphs showing the percent F and W grades awarded students taking courses with the specified prefix. Each grade graph has a black line representing the overall Harper percent of students (excluding AED courses) receiving that grade. Each grade graph also has two red lines representing three course prefix standard errors above and below the black line. The percent line for the specified prefix is blue. An annotated sample graph is provided below.

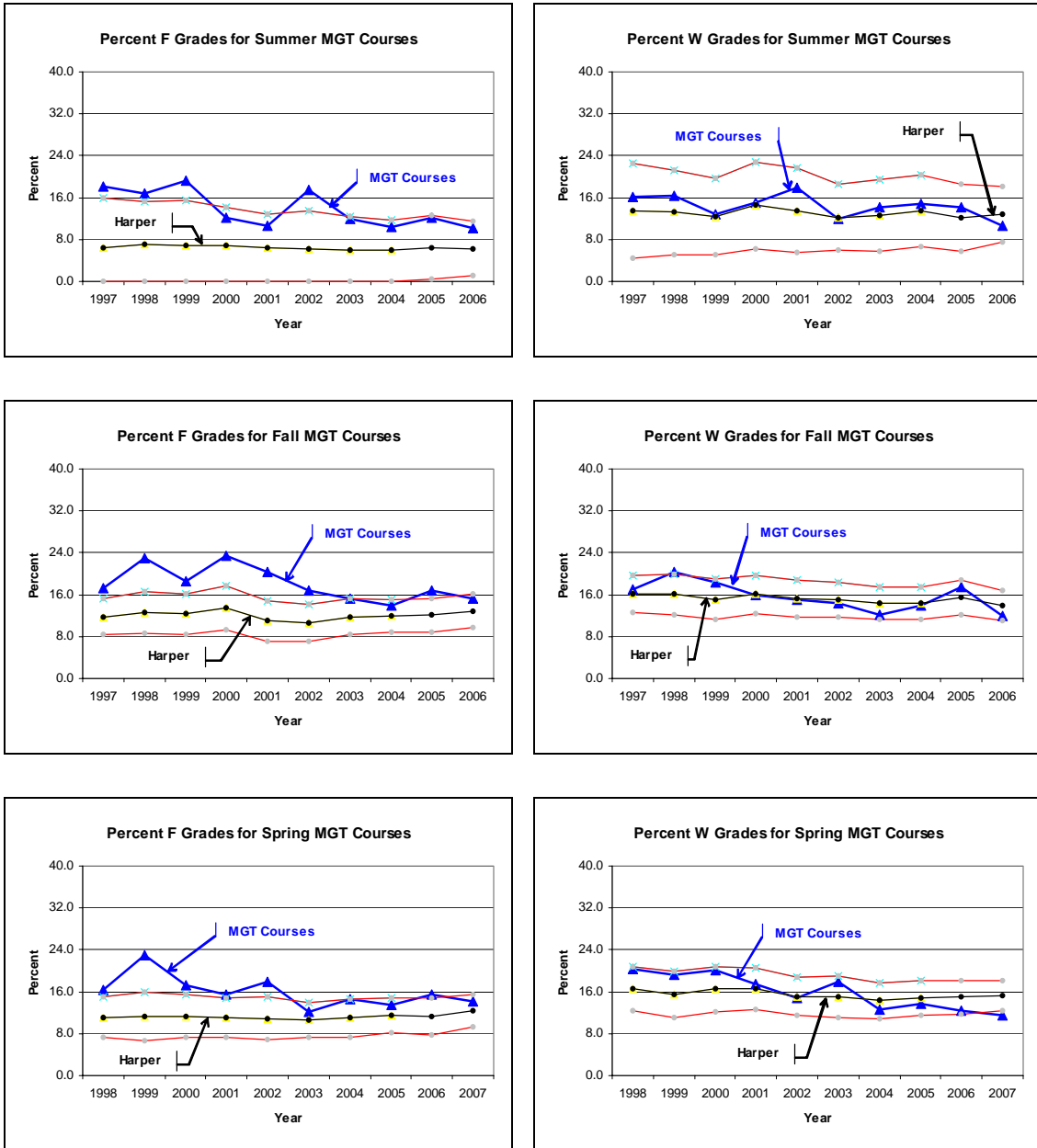


Generally, the blue line should stay between the two red lines with some points above the black line and some points below the black line. Blue points that are above the top red line represent percents that are significantly above the overall Harper percent ( $p < .01$ ). Similarly, blue points that are below the bottom red line represent percents that are significantly below the overall Harper percent ( $p < .01$ ).

If the graphs on the following pages show several “blue” points above the top red line or below the bottom red line, further investigation may be warranted. In the sample graph, most of the blue points are above the top red line. This indicates an excessive number of W’s were issued for courses with the “SAMPLE” prefix. When all the blue points are below the black line the percent is consistently on the low side; similarly, when all the blue points are above the black line the percent is consistently on the high side.

The last page includes tables giving the total number of all grades given for each year, the percent of each grade type (%A, %B, %C, %D, %F, %W) graphed and its standard error (SE), and another grade labeled “O.” O grades are other types of grades (audit, transfer credit, pass, incomplete, and so forth). Typically there are very few O grades.

## Grade Distributions for MGT Prefix Courses by Semester



Total N of MGT Students and Percent Earning Each Grade with Standard Error (SE)

Summer	N	%A	SE	%B	SE	%C	SE	%D	SE	%F	SE	%W	SE	%O	SE	%P	SE
1997	149	12.1	2.7	18.8	3.2	28.2	3.7	6.7	2.0	18.1	3.2	16.1	3.0	0.0	0.0	0.0	0.0
1998	190	12.1	2.4	22.1	3.0	22.1	3.0	10.5	2.2	16.8	2.7	16.3	2.7	0.0	0.0	0.0	0.0
1999	187	23.5	3.1	19.8	2.9	20.3	2.9	4.3	1.5	19.3	2.9	12.8	2.4	0.0	0.0	0.0	0.0
2000	172	23.8	3.2	19.2	3.0	19.2	3.0	10.5	2.3	12.2	2.5	15.1	2.7	0.0	0.0	0.0	0.0
2001	206	29.6	3.2	15.5	2.5	16.5	2.6	9.7	2.1	10.7	2.2	18.0	2.7	0.0	0.0	0.0	0.0
2002	241	37.8	3.1	16.6	2.4	10.0	1.9	6.2	1.6	17.4	2.4	12.0	2.1	0.0	0.0	0.0	0.0
2003	233	42.1	3.2	17.2	2.5	11.2	2.1	3.4	1.2	12.0	2.1	14.2	2.3	0.0	0.0	0.0	0.0
2004	242	36.8	3.1	17.8	2.5	16.1	2.4	4.1	1.3	10.3	2.0	14.9	2.3	0.0	0.0	0.0	0.0
2005	262	37.0	3.0	19.1	2.4	14.5	2.2	3.1	1.1	12.2	2.0	14.1	2.2	0.0	0.0	0.0	0.0
2006	302	37.1	2.8	22.2	2.4	16.6	2.1	3.3	1.0	10.3	1.7	10.6	1.8	0.0	0.0	0.0	0.0

Fall	N	%A	SE	%B	SE	%C	SE	%D	SE	%F	SE	%W	SE	%O	SE	%P	SE
1997	1051	20.9	1.3	20.9	1.3	16.4	1.1	7.4	0.8	17.2	1.2	17.1	1.2	0.0	0.0	0.0	0.0
1998	979	16.3	1.2	19.5	1.3	15.1	1.1	5.8	0.7	22.9	1.3	20.3	1.3	0.0	0.0	0.0	0.0
1999	932	17.2	1.2	21.7	1.3	15.8	1.2	8.4	0.9	18.5	1.3	18.3	1.3	0.2	0.2	0.0	0.0
2000	929	20.2	1.3	18.1	1.3	16.4	1.2	6.1	0.8	23.4	1.4	15.8	1.2	0.0	0.0	0.0	0.0
2001	934	25.5	1.4	19.7	1.3	12.8	1.1	6.5	0.8	20.2	1.3	15.1	1.2	0.1	0.1	0.0	0.0
2002	991	29.4	1.4	18.8	1.2	13.6	1.1	7.1	0.8	16.9	1.2	14.3	1.1	0.0	0.0	0.0	0.0
2003	1014	33.8	1.5	18.1	1.2	14.0	1.1	6.5	0.8	15.3	1.1	12.1	1.0	0.1	0.1	0.0	0.0
2004	1119	31.8	1.4	20.6	1.2	13.8	1.0	5.9	0.7	14.0	1.0	13.9	1.0	0.0	0.0	0.0	0.0
2005	1192	24.1	1.2	22.5	1.2	13.5	1.0	5.9	0.7	16.7	1.1	17.4	1.1	0.0	0.0	0.0	0.0
2006	1145	29.3	1.3	21.0	1.2	16.2	1.1	6.3	0.7	15.3	1.1	11.9	1.0	0.0	0.0	0.0	0.0

Spring	N	%A	SE	%B	SE	%C	SE	%D	SE	%F	SE	%W	SE	%O	SE	%P	SE
1998	828	23.1	1.5	18.8	1.4	15.5	1.3	6.0	0.8	16.3	1.3	20.3	1.4	0.0	0.0	0.0	0.0
1999	735	17.3	1.4	15.8	1.3	19.0	1.4	5.7	0.9	23.0	1.6	19.2	1.5	0.0	0.0	0.0	0.0
2000	762	21.7	1.5	17.8	1.4	16.9	1.4	6.2	0.9	17.2	1.4	20.2	1.5	0.0	0.0	0.0	0.0
2001	845	26.3	1.5	21.4	1.4	13.3	1.2	6.0	0.8	15.5	1.2	17.5	1.3	0.0	0.0	0.0	0.0
2002	825	25.0	1.5	19.6	1.4	15.2	1.2	7.4	0.9	17.9	1.3	14.9	1.2	0.0	0.0	0.0	0.0
2003	852	33.7	1.6	17.0	1.3	12.3	1.1	7.0	0.9	12.1	1.1	17.8	1.3	0.0	0.0	0.0	0.0
2004	837	32.3	1.6	19.7	1.4	15.2	1.2	5.7	0.8	14.6	1.2	12.5	1.1	0.0	0.0	0.0	0.0
2005	949	37.0	1.6	17.7	1.2	13.5	1.1	4.7	0.7	13.4	1.1	13.7	1.1	0.0	0.0	0.0	0.0
2006	964	27.3	1.4	21.9	1.3	17.0	1.2	5.7	0.7	15.6	1.2	12.4	1.1	0.1	0.1	0.0	0.0
2007	1141	33.6	1.4	21.3	1.2	14.0	1.0	5.5	0.7	14.1	1.0	11.5	0.9	0.0	0.0	0.0	0.0

\*Harper overall percent plus/minus three standard errors form the red lines on the graphs. MGT percents within the red lines are not significantly different from the overall Harper percent at the .01 level of significance.