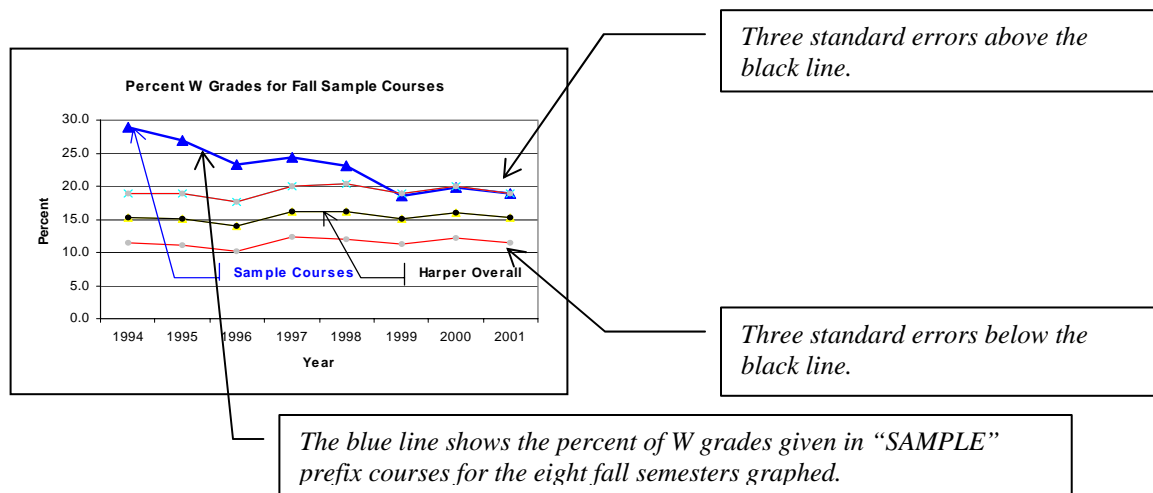


Semester Level Grade Distributions  
with Graphs for  
HSC Prefix Courses

*Prepared by the Office of Research  
Teaming to Serve the Research Needs of the College  
November 21, 2007*

The page that follows provides grade distributions for the past ten summer, fall, and spring semesters, which contains six graphs showing the percent F and W grades awarded students taking courses with the specified prefix. Each grade graph has a black line representing the overall Harper percent of students (excluding AED courses) receiving that grade. Each grade graph also has two red lines representing three course prefix standard errors above and below the black line. The percent line for the specified prefix is blue. An annotated sample graph is provided below.

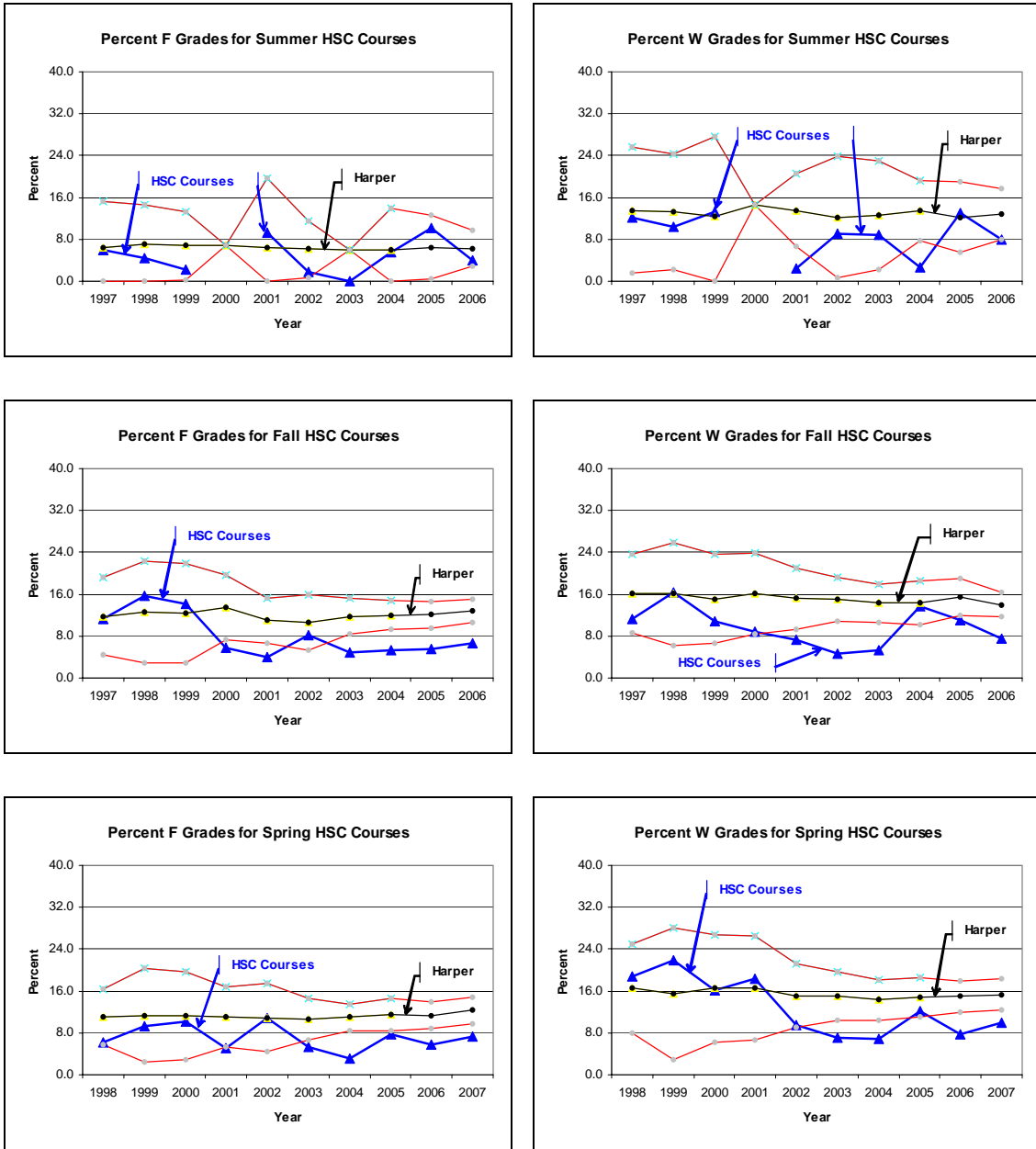


Generally, the blue line should stay between the two red lines with some points above the black line and some points below the black line. Blue points that are above the top red line represent percents that are significantly above the overall Harper percent ( $p < .01$ ). Similarly, blue points that are below the bottom red line represent percents that are significantly below the overall Harper percent ( $p < .01$ ).

If the graphs on the following pages show several “blue” points above the top red line or below the bottom red line, further investigation may be warranted. In the sample graph, most of the blue points are above the top red line. This indicates an excessive number of W’s were issued for courses with the “SAMPLE” prefix. When all the blue points are below the black line the percent is consistently on the low side; similarly, when all the blue points are above the black line the percent is consistently on the high side.

The last page includes tables giving the total number of all grades given for each year, the percent of each grade type (%A, %B, %C, %D, %F, %W) graphed and its standard error (SE), and another grade labeled “O.” O grades are other types of grades (audit, transfer credit, pass, incomplete, and so forth). Typically there are very few O grades.

## Grade Distributions for HSC Prefix Courses by Semester



Total N of HSC Students and Percent Earning Each Grade with Standard Error (SE)

Summer	N	%A	SE	%B	SE	%C	SE	%D	SE	%F	SE	%W	SE	%O	SE	%P	SE
1997	66	40.9	6.1	25.8	5.4	12.1	4.0	3.0	2.1	6.1	2.9	12.1	4.0	0.0	0.0	0.0	0.0
1998	68	35.3	5.8	30.9	5.6	16.2	4.5	2.9	2.0	4.4	2.5	10.3	3.7	0.0	0.0	0.0	0.0
1999	45	42.2	7.4	31.1	6.9	6.7	3.7	4.4	3.1	2.2	2.2	13.3	5.1	0.0	0.0	0.0	0.0
2000	0																
2001	43	53.5	7.6	20.9	6.2	9.3	4.4	4.7	3.2	9.3	4.4	2.3	2.3	0.0	0.0	0.0	0.0
2002	55	78.2	5.6	7.3	3.5	0.0	0.0	3.6	2.5	1.8	1.8	9.1	3.9	0.0	0.0	0.0	0.0
2003	68	72.1	5.4	16.2	4.5	2.9	2.0	0.0	0.0	0.0	0.0	8.8	3.4	0.0	0.0	0.0	0.0
2004	73	76.7	4.9	12.3	3.8	1.4	1.4	1.4	1.4	5.5	2.7	2.7	1.9	0.0	0.0	0.0	0.0
2005	224	57.6	3.3	14.7	2.4	3.1	1.2	1.3	0.8	10.3	2.0	12.9	2.2	0.0	0.0	0.0	0.0
2006	278	63.3	2.9	17.3	2.3	6.1	1.4	1.4	0.7	4.0	1.2	7.9	1.6	0.0	0.0	0.0	0.0

Fall	N	%A	SE	%B	SE	%C	SE	%D	SE	%F	SE	%W	SE	%O	SE	%P	SE
1997	161	23.6	3.3	32.3	3.7	18.6	3.1	3.1	1.4	11.2	2.5	11.2	2.5	0.0	0.0	0.0	0.0
1998	128	18.0	3.4	31.3	4.1	12.5	2.9	6.3	2.1	15.6	3.2	16.4	3.3	0.0	0.0	0.0	0.0
1999	121	18.2	3.5	33.1	4.3	17.4	3.4	6.6	2.3	14.0	3.2	10.7	2.8	0.0	0.0	0.0	0.0
2000	123	65.9	4.3	12.2	3.0	4.9	1.9	2.4	1.4	5.7	2.1	8.9	2.6	0.0	0.0	0.0	0.0
2001	177	61.0	3.7	20.9	3.1	6.2	1.8	0.6	0.6	4.0	1.5	7.3	2.0	0.0	0.0	0.0	0.0
2002	235	67.2	3.1	14.5	2.3	4.7	1.4	0.9	0.6	8.1	1.8	4.7	1.4	0.0	0.0	0.0	0.0
2003	354	60.2	2.6	20.9	2.2	7.6	1.4	1.1	0.6	4.8	1.1	5.4	1.2	0.0	0.0	0.0	0.0
2004	601	51.9	2.0	20.3	1.6	6.2	1.0	2.7	0.7	5.3	0.9	13.6	1.4	0.0	0.0	0.0	0.0
2005	717	60.1	1.8	17.4	1.4	4.6	0.8	1.1	0.4	5.6	0.9	11.0	1.2	0.1	0.1	0.0	0.0
2006	1104	49.2	1.5	24.5	1.3	9.7	0.9	2.5	0.5	6.5	0.7	7.5	0.8	0.0	0.0	0.0	0.0

Spring	N	%A	SE	%B	SE	%C	SE	%D	SE	%F	SE	%W	SE	%O	SE	%P	SE
1998	191	23.0	3.0	32.5	3.4	15.2	2.6	4.2	1.4	6.3	1.8	18.8	2.8	0.0	0.0	0.0	0.0
1999	96	19.8	4.1	28.1	4.6	16.7	3.8	4.2	2.0	9.4	3.0	21.9	4.2	0.0	0.0	0.0	0.0
2000	117	14.5	3.3	28.2	4.2	20.5	3.7	10.3	2.8	10.3	2.8	16.2	3.4	0.0	0.0	0.0	0.0
2001	136	53.7	4.3	16.9	3.2	2.2	1.3	3.7	1.6	5.1	1.9	18.4	3.3	0.0	0.0	0.0	0.0
2002	211	54.5	3.4	15.6	2.5	5.2	1.5	3.8	1.3	10.9	2.1	9.5	2.0	0.5	0.5	0.0	0.0
2003	283	52.3	3.0	24.0	2.5	9.5	1.7	1.8	0.8	5.3	1.3	7.1	1.5	0.0	0.0	0.0	0.0
2004	389	59.1	2.5	21.6	2.1	8.2	1.4	1.0	0.5	3.1	0.9	6.9	1.3	0.0	0.0	0.0	0.0
2005	651	52.7	2.0	20.7	1.6	5.8	0.9	0.9	0.4	7.7	1.0	12.1	1.3	0.0	0.0	0.0	0.0
2006	715	58.9	1.8	19.2	1.5	5.9	0.9	2.5	0.6	5.7	0.9	7.8	1.0	0.0	0.0	0.0	0.0
2007	938	40.1	1.6	26.5	1.4	12.0	1.1	3.7	0.6	7.4	0.9	10.0	1.0	0.0	0.0	0.0	0.0

\*Harper overall percent plus/minus three standard errors form the red lines on the graphs. HSC percents within the red lines are not significantly different from the overall Harper percent at the .01 level of significance.