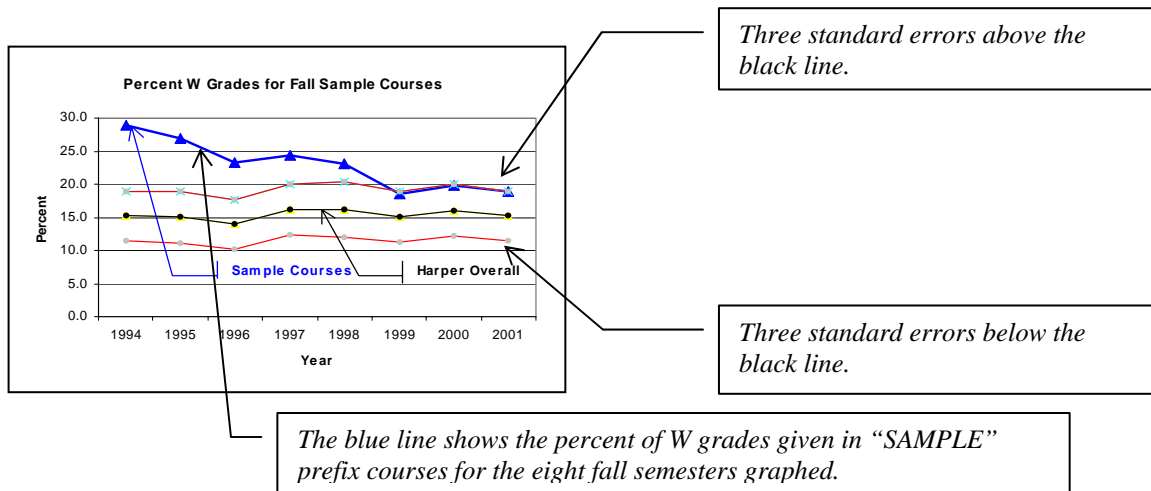


Semester Level Grade Distributions  
with Graphs for  
PLS Prefix Courses

*Prepared by the Office of Research  
Teaming to Serve the Research Needs of the College  
November 22, 2006*

The page that follows provides grade distributions for the past ten summer, fall, and spring semesters, which contains six graphs showing the percent F and W grades awarded students taking courses with the specified prefix. Each grade graph has a black line representing the overall Harper percent of students (excluding AED courses) receiving that grade. Each grade graph also has two red lines representing three course prefix standard errors above and below the black line. The percent line for the specified prefix is blue. An annotated sample graph is provided below.

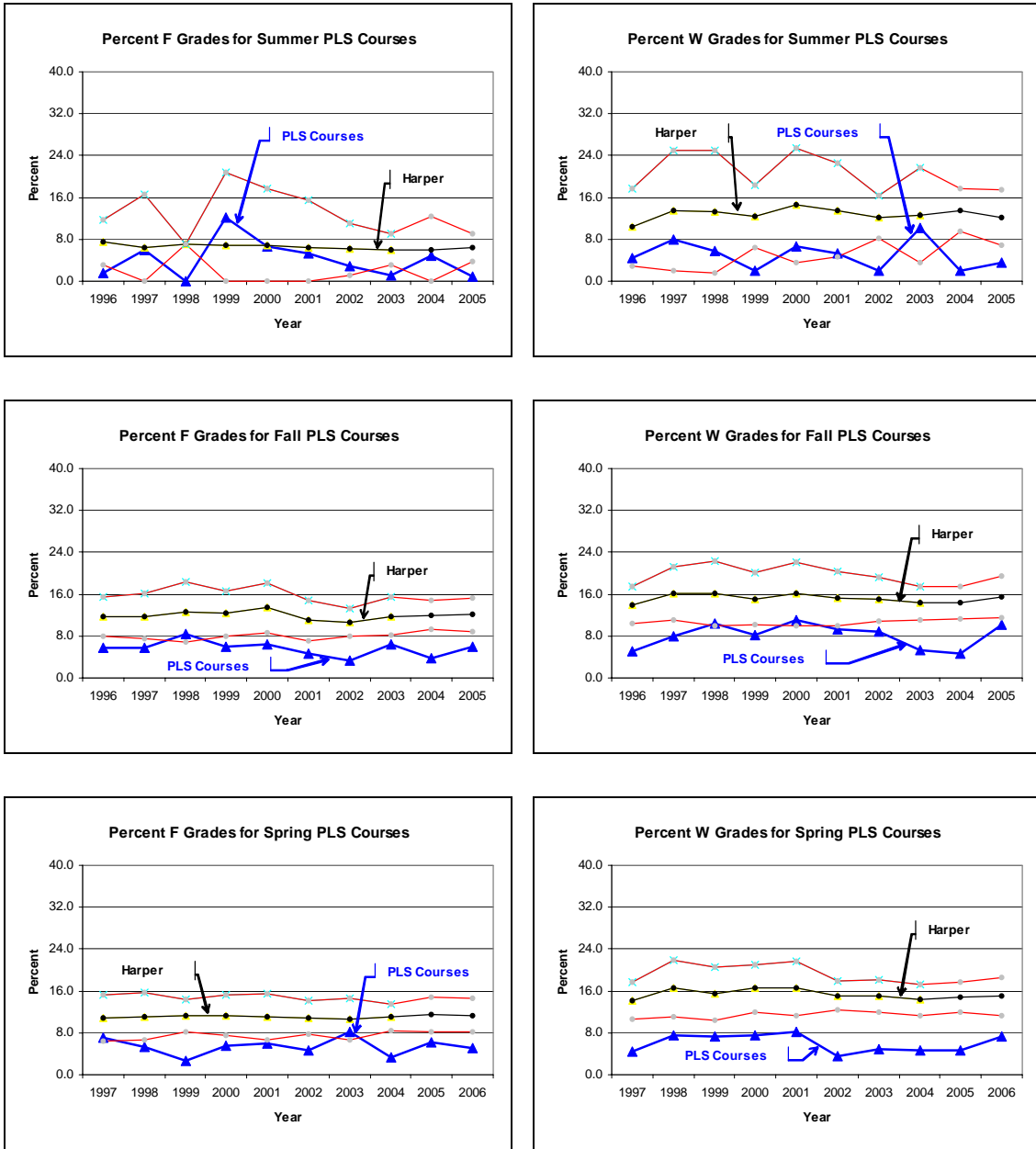


Generally, the blue line should stay between the two red lines with some points above the black line and some points below the black line. Blue points that are above the top red line represent percents that are significantly above the overall Harper percent ( $p < .01$ ). Similarly, blue points that are below the bottom red line represent percents that are significantly below the overall Harper percent ( $p < .01$ ).

If the graphs on the following pages show several “blue” points above the top red line or below the bottom red line, further investigation may be warranted. In the sample graph, most of the blue points are above the top red line. This indicates an excessive number of W’s were issued for courses with the “SAMPLE” prefix. When all the blue points are below the black line the percent is consistently on the low side; similarly, when all the blue points are above the black line the percent is consistently on the high side.

The last page includes tables giving the total number of all grades given for each year, the percent of each grade type (%A, %B, %C, %D, %F, %W) graphed and its standard error (SE), and another grade labeled “O.” O grades are other types of grades (audit, transfer credit, pass, incomplete, and so forth). Typically there are very few O grades.

## Grade Distributions for PLS Prefix Courses by Semester



Total N of PLS Students and Percent Earning Each Grade with Standard Error (SE)

Summer	N	%A	SE	%B	SE	%C	SE	%D	SE	%F	SE	%W	SE	%O	SE
1996	68	57.4	6.0	26.5	5.4	8.8	3.4	1.5	1.5	1.5	1.5	4.4	2.5	0.0	0.0
1997	50	40.0	6.9	24.0	6.0	18.0	5.4	4.0	2.8	6.0	3.4	8.0	3.8	0.0	0.0
1998	35	74.3	7.4	17.1	6.4	2.9	2.8	0.0	0.0	0.0	0.0	5.7	3.9	0.0	0.0
1999	49	38.8	7.0	26.5	6.3	16.3	5.3	4.1	2.8	12.2	4.7	2.0	2.0	0.0	0.0
2000	46	32.6	6.9	37.0	7.1	10.9	4.6	6.5	3.6	6.5	3.6	6.5	3.6	0.0	0.0
2001	56	35.7	6.4	37.5	6.5	12.5	4.4	3.6	2.5	5.4	3.0	5.4	3.0	0.0	0.0
2002	103	50.5	4.9	32.0	4.6	11.7	3.2	1.0	1.0	2.9	1.7	1.9	1.4	0.0	0.0
2003	99	48.5	5.0	30.3	4.6	8.1	2.7	2.0	1.4	1.0	1.0	10.1	3.0	0.0	0.0
2004	102	39.2	4.8	37.3	4.8	15.7	3.6	1.0	1.0	4.9	2.1	2.0	1.4	0.0	0.0
2005	112	40.2	4.6	33.9	4.5	19.6	3.8	1.8	1.3	0.9	0.9	3.6	1.8	0.0	0.0

Fall	N	%A	SE	%B	SE	%C	SE	%D	SE	%F	SE	%W	SE	%O	SE
1996	351	44.4	2.7	29.1	2.4	12.3	1.8	3.1	0.9	5.7	1.2	5.1	1.2	0.3	0.3
1997	261	39.5	3.0	31.4	2.9	9.2	1.8	5.4	1.4	5.7	1.4	8.0	1.7	0.8	0.5
1998	214	35.5	3.3	29.4	3.1	13.1	2.3	3.3	1.2	8.4	1.9	10.3	2.1	0.0	0.0
1999	267	47.2	3.1	30.0	2.8	7.1	1.6	1.5	0.7	6.0	1.5	8.2	1.7	0.0	0.0
2000	237	40.1	3.2	30.4	3.0	10.1	2.0	1.7	0.8	6.3	1.6	11.0	2.0	0.4	0.4
2001	280	42.5	3.0	29.6	2.7	11.4	1.9	2.5	0.9	4.6	1.3	9.3	1.7	0.0	0.0
2002	420	44.5	2.4	31.4	2.3	10.0	1.5	1.9	0.7	3.3	0.9	8.8	1.4	0.0	0.0
2003	422	50.9	2.4	27.7	2.2	8.8	1.4	0.9	0.5	6.4	1.2	5.2	1.1	0.0	0.0
2004	433	54.3	2.4	26.1	2.1	10.2	1.5	0.9	0.5	3.7	0.9	4.6	1.0	0.2	0.2
2005	505	48.3	2.2	21.8	1.8	12.1	1.5	1.8	0.6	5.9	1.1	10.1	1.3	0.0	0.0

Spring	N	%A	SE	%B	SE	%C	SE	%D	SE	%F	SE	%W	SE	%O	SE
1997	295	52.2	2.9	22.0	2.4	11.2	1.8	2.4	0.9	7.1	1.5	4.4	1.2	0.7	0.5
1998	211	44.1	3.4	30.3	3.2	10.0	2.1	2.4	1.0	5.2	1.5	7.6	1.8	0.5	0.5
1999	234	44.9	3.3	32.1	3.1	11.1	2.1	0.9	0.6	2.6	1.0	7.3	1.7	1.3	0.7
2000	305	43.0	2.8	33.4	2.7	8.5	1.6	2.0	0.8	5.6	1.3	7.5	1.5	0.0	0.0
2001	254	46.9	3.1	28.3	2.8	8.3	1.7	2.4	1.0	5.9	1.5	8.3	1.7	0.0	0.0
2002	400	54.0	2.5	26.8	2.2	10.0	1.5	1.0	0.5	4.8	1.1	3.5	0.9	0.0	0.0
2003	423	49.2	2.4	25.5	2.1	9.9	1.5	2.1	0.7	8.3	1.3	5.0	1.1	0.0	0.0
2004	457	55.1	2.3	26.9	2.1	9.4	1.4	0.7	0.4	3.3	0.8	4.6	1.0	0.0	0.0
2005	468	51.3	2.3	23.7	2.0	11.8	1.5	2.4	0.7	6.2	1.1	4.7	1.0	0.0	0.0
2006	447	50.1	2.4	22.8	2.0	11.9	1.5	2.5	0.7	5.1	1.0	7.4	1.2	0.2	0.2

\*Harper overall percent plus/minus three standard errors form the red lines on the graphs. PLS percents within the red lines are not significantly different from the overall Harper percent at the .01 level of significance.