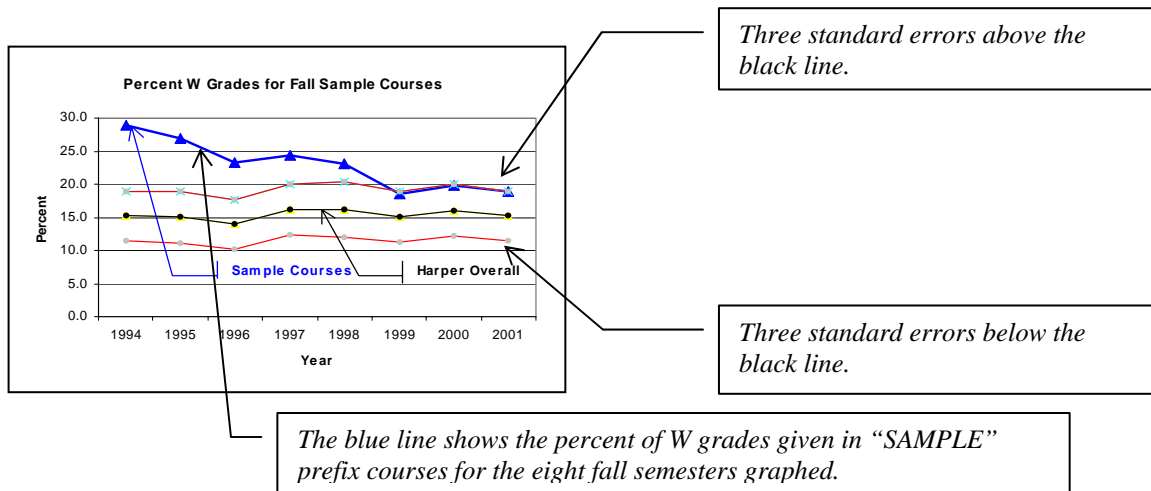


Semester Level Grade Distributions  
with Graphs for  
LIT Prefix Courses

*Prepared by the Office of Research  
Teaming to Serve the Research Needs of the College  
November 22, 2006*

The page that follows provides grade distributions for the past ten summer, fall, and spring semesters, which contains six graphs showing the percent F and W grades awarded students taking courses with the specified prefix. Each grade graph has a black line representing the overall Harper percent of students (excluding AED courses) receiving that grade. Each grade graph also has two red lines representing three course prefix standard errors above and below the black line. The percent line for the specified prefix is blue. An annotated sample graph is provided below.

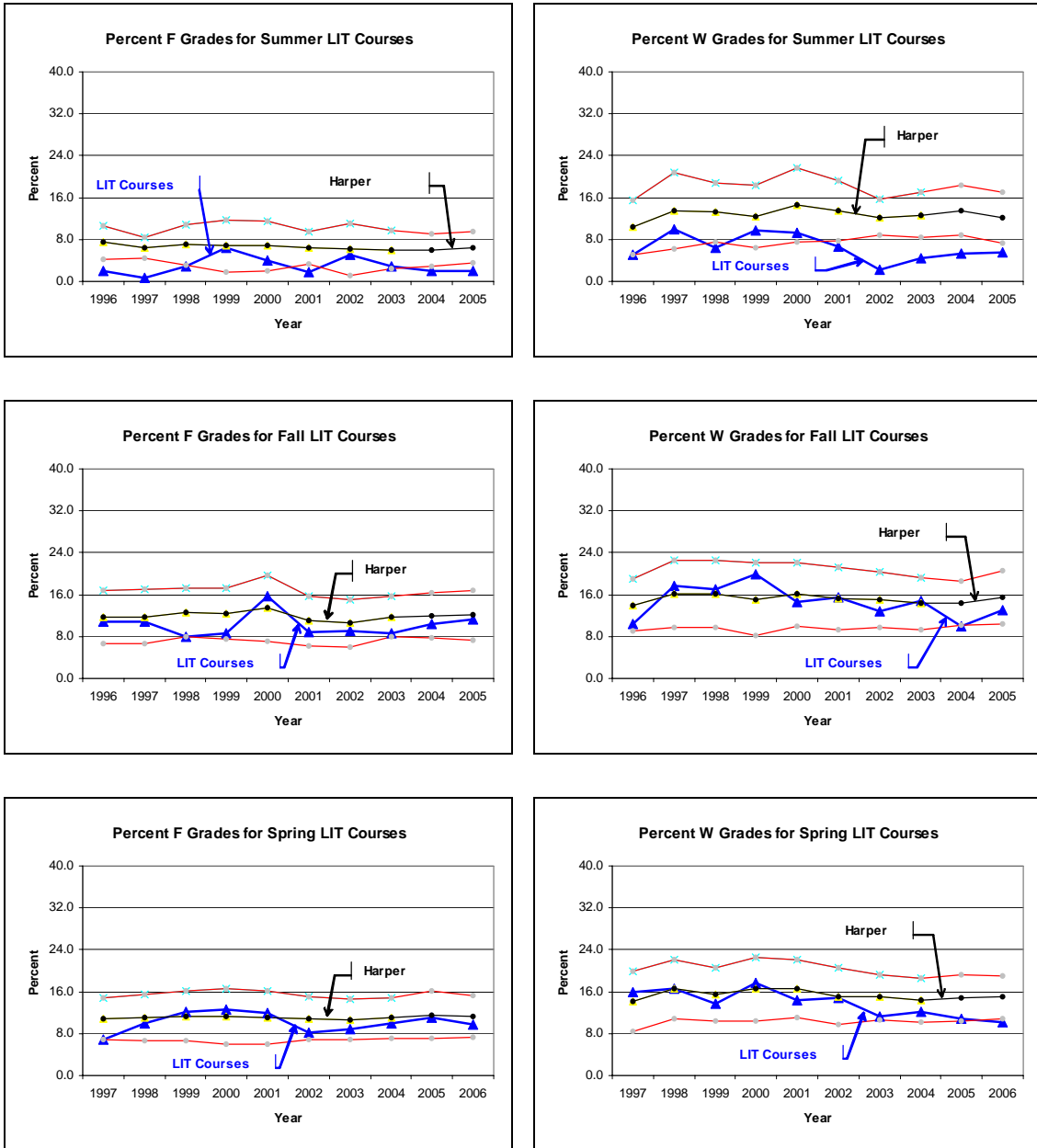


Generally, the blue line should stay between the two red lines with some points above the black line and some points below the black line. Blue points that are above the top red line represent percents that are significantly above the overall Harper percent ( $p < .01$ ). Similarly, blue points that are below the bottom red line represent percents that are significantly below the overall Harper percent ( $p < .01$ ).

If the graphs on the following pages show several “blue” points above the top red line or below the bottom red line, further investigation may be warranted. In the sample graph, most of the blue points are above the top red line. This indicates an excessive number of W’s were issued for courses with the “SAMPLE” prefix. When all the blue points are below the black line the percent is consistently on the low side; similarly, when all the blue points are above the black line the percent is consistently on the high side.

The last page includes tables giving the total number of all grades given for each year, the percent of each grade type (%A, %B, %C, %D, %F, %W) graphed and its standard error (SE), and another grade labeled “O.” O grades are other types of grades (audit, transfer credit, pass, incomplete, and so forth). Typically there are very few O grades.

## Grade Distributions for LIT Prefix Courses by Semester



Total N of LIT Students and Percent Earning Each Grade with Standard Error (SE)

Summer	N	%A	SE	%B	SE	%C	SE	%D	SE	%F	SE	%W	SE	%O	SE
1996	157	40.1	3.9	35.7	3.8	16.6	3.0	0.0	0.0	1.9	1.1	5.1	1.8	0.6	0.6
1997	152	36.8	3.9	38.2	3.9	13.2	2.7	0.7	0.7	0.7	0.7	9.9	2.4	0.7	0.7
1998	170	41.2	3.8	35.9	3.7	12.9	2.6	0.0	0.0	2.9	1.3	6.5	1.9	0.6	0.6
1999	216	40.3	3.3	36.1	3.3	6.9	1.7	0.0	0.0	6.5	1.7	9.7	2.0	0.5	0.5
2000	151	39.7	4.0	33.8	3.8	11.9	2.6	1.3	0.9	4.0	1.6	9.3	2.4	0.0	0.0
2001	167	50.9	3.9	33.5	3.7	6.0	1.8	1.2	0.8	1.8	1.0	6.6	1.9	0.0	0.0
2002	177	53.1	3.8	24.9	3.2	10.7	2.3	4.0	1.5	5.1	1.7	2.3	1.1	0.0	0.0
2003	203	45.8	3.5	39.9	3.4	5.9	1.7	1.0	0.7	3.0	1.2	4.4	1.4	0.0	0.0
2004	191	54.5	3.6	27.2	3.2	9.9	2.2	1.0	0.7	2.1	1.0	5.2	1.6	0.0	0.0
2005	201	63.2	3.4	20.9	2.9	7.5	1.9	1.0	0.7	2.0	1.0	5.5	1.6	0.0	0.0

Fall	N	%A	SE	%B	SE	%C	SE	%D	SE	%F	SE	%W	SE	%O	SE
1996	339	33.0	2.6	31.9	2.5	13.3	1.8	0.6	0.4	10.9	1.7	10.3	1.7	0.0	0.0
1997	322	22.4	2.3	29.8	2.5	16.1	2.1	3.1	1.0	10.9	1.7	17.7	2.1	0.0	0.0
1998	311	29.3	2.6	27.0	2.5	14.8	2.0	3.9	1.1	8.0	1.5	17.0	2.1	0.0	0.0
1999	292	33.6	2.8	20.2	2.3	15.4	2.1	2.4	0.9	8.6	1.6	19.9	2.3	0.0	0.0
2000	301	30.9	2.7	23.6	2.4	12.6	1.9	2.3	0.9	15.6	2.1	14.6	2.0	0.3	0.3
2001	325	36.6	2.7	25.2	2.4	12.3	1.8	1.5	0.7	8.9	1.6	15.4	2.0	0.0	0.0
2002	362	32.3	2.5	26.8	2.3	16.6	2.0	2.2	0.8	9.1	1.5	12.7	1.8	0.3	0.3
2003	459	36.4	2.2	24.8	2.0	12.4	1.5	2.8	0.8	8.7	1.3	14.8	1.7	0.0	0.0
2004	449	32.7	2.2	28.7	2.1	14.3	1.6	3.6	0.9	10.5	1.4	10.0	1.4	0.2	0.2
2005	396	33.1	2.4	30.3	2.3	10.1	1.5	1.8	0.7	11.4	1.6	13.1	1.7	0.3	0.3

Spring	N	%A	SE	%B	SE	%C	SE	%D	SE	%F	SE	%W	SE	%O	SE
1997	364	30.2	2.4	31.9	2.4	12.9	1.8	2.2	0.8	6.9	1.3	15.9	1.9	0.0	0.0
1998	404	29.5	2.3	28.0	2.2	14.1	1.7	2.0	0.7	9.9	1.5	16.6	1.9	0.0	0.0
1999	428	23.8	2.1	29.0	2.2	16.6	1.8	4.7	1.0	12.1	1.6	13.8	1.7	0.0	0.0
2000	355	32.7	2.5	24.5	2.3	10.4	1.6	1.7	0.7	12.7	1.8	17.7	2.0	0.3	0.3
2001	371	31.0	2.4	24.5	2.2	13.7	1.8	4.6	1.1	11.9	1.7	14.3	1.8	0.0	0.0
2002	392	38.8	2.5	23.2	2.1	11.0	1.6	3.3	0.9	8.2	1.4	14.8	1.8	0.8	0.4
2003	483	35.4	2.2	29.8	2.1	12.2	1.5	2.5	0.7	8.9	1.3	11.2	1.4	0.0	0.0
2004	539	32.3	2.0	31.0	2.0	12.4	1.4	2.0	0.6	10.0	1.3	12.1	1.4	0.2	0.2
2005	429	39.2	2.4	27.0	2.1	9.6	1.4	2.3	0.7	11.0	1.5	10.7	1.5	0.2	0.2
2006	492	36.4	2.2	28.9	2.0	12.8	1.5	2.0	0.6	9.8	1.3	10.2	1.4	0.0	0.0

\*Harper overall percent plus/minus three standard errors form the red lines on the graphs. LIT percents within the red lines are not significantly different from the overall Harper percent at the .01 level of significance.