

- LEGEND:**
- 4" MINIMUM CLEARANCE
 - BUILDING
 - CONCRETE PAVEMENT AND BASE
 - CONCRETE WALK AND BASE
 - ASPHALT PAVEMENT AND BASE
 - CONCRETE CURB AND GUTTER
 - DEPRESSED CURB
 - 8" DIMENSIONAL FENCE
 - SIGN
 - REFER TO LANDSCAPE DRAWINGS FOR LANDSCAPE LAYOUT

NOTE:
1. REFER TO ARCHITECTURAL PLANS FOR DELINEATION OF ALTERNATE SCOPE.

ARCHITECTURE
FGM Architects
1211 W 22nd St, Suite 700
Oak Brook, IL 60523
630.574.8300 office
630.574.7070 fax
ILLINOIS PROFESSIONAL DESIGN NUMBER 1188-0038

CIVIL / LANDSCAPE
TERBA Engineering, Ltd.
125 West York Street
Chicago, IL 60601
630.461.2300 office
630.461.2302 fax
ILLINOIS PROFESSIONAL DESIGN NUMBER 1025-0113

MECHANICAL / ELECTRICAL / PLUMBING
MELK Group
2445 E. North Branch, Suite 200
Chicago, IL 60604
773.246.5300 office
773.246.5301 fax
ILLINOIS PROFESSIONAL DESIGN NUMBER 1025-0113

STRUCTURAL
LINC, Lillard, McEwen & Assoc.
8801 Lakeshore, Suite 601
Morton Grove, IL 60053
708.866.4020
ILLINOIS PROFESSIONAL DESIGN NUMBER 1025-0113

DATE	DESCRIPTION

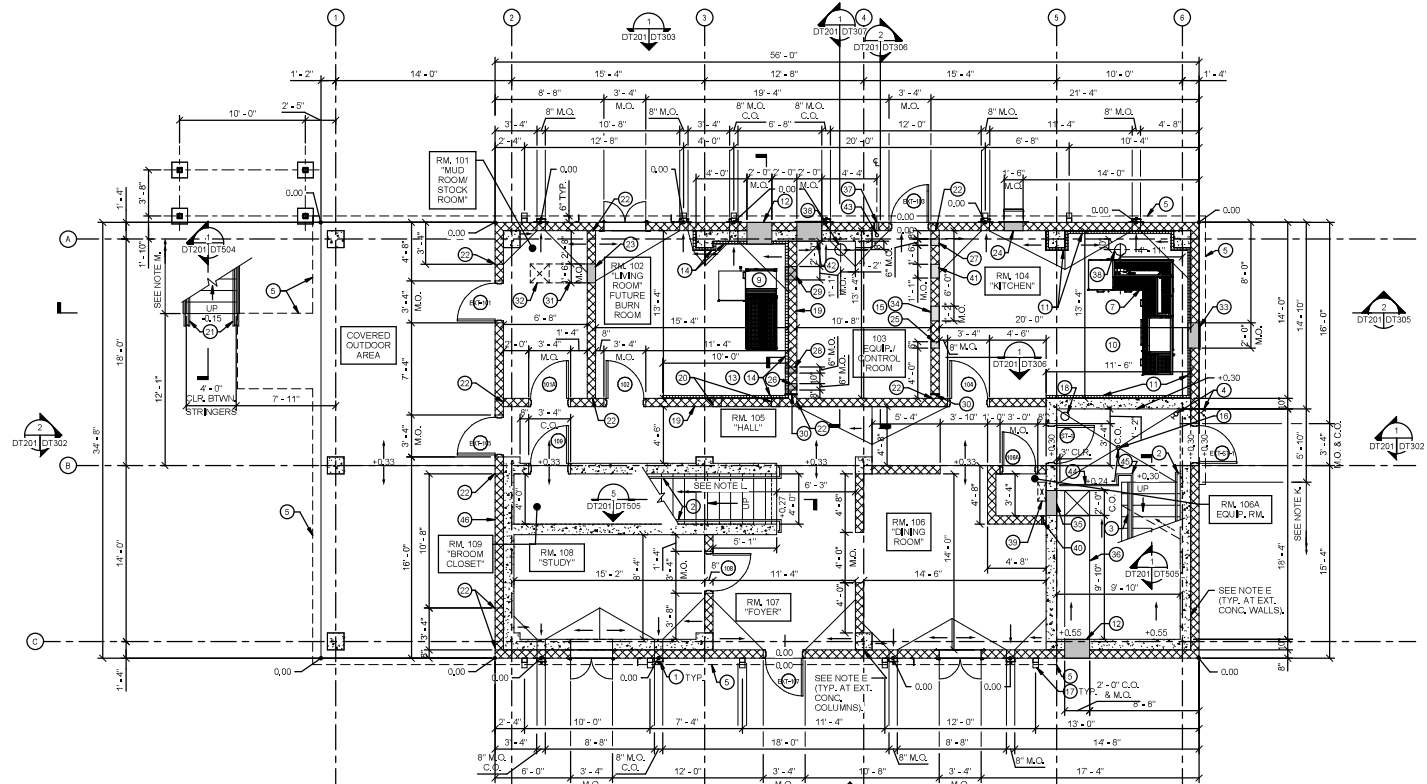
ISSUANCE

NO.	DATE	DESCRIPTION
1	10/01/2024	Issue for BID

Building Q : Emergency Services Training Center
William Rainey Harper College
1200 West Algonquin Road
Palatine, IL 60067

ISSUE FOR BID

Copyright 2024 FGM Architects, Inc.



- NOTES**
- A. TOP OF FINISHED CONCRETE ELEVATION FOR THE BURN BUILDING SLAB IS INDICATED AS "XXX" IN FEET ABOVE DATUM. DATUM IS AT ELEVATION 73.00; FLOOR ELEVATIONS ARE NOTED AS "+XXX" OR "-XXX" IN FEET ABOVE OR BELOW DATUM.
 - C. SEE SITE DRAWINGS FOR TOP OF EXTERIOR FINISHED GRADE AND OTHER SITE ELEVATIONS.
 - D. ALL SINGLE-HALEY MASONRY WALLS SHALL BE 8" THICK (NOMINAL). ALL CONCRETE WALLS SHALL BE 10" THICK (ACTUAL).
 - E. AT ALL LOCATIONS WHERE MASONRY WALLS ARE BACKED W/ CON. WALLS OR COLUMNS, MASONRY WALLS SHALL BE TIGHT AGAINST CONCRETE WALLS & COLUMN FACES WITH A GAP BETWEEN THE TWO NOT EXCEEDING 3/8". CONNECT MASONRY TO CONCRETE PER GENERAL NOTE C.15 ON SHEET DT101.
 - F. PROVIDE (2) COATS OF MASONRY SEALER ON EXTERIOR FACES OF ALL EXTERIOR CMU WALLS PER GENERAL NOTES & SPECS.
 - G. PROVIDE BULLNOSE (CMU) OR CHAMFERED (CONCRETE) CORNERS AT JAMBS OF ALL WINDOW OPENINGS, AT ENDS OF WALLS THAT DO NOT INTERSECT OTHER WALLS, AND AT INTERIOR WALL CORNERS. DO NOT CHAMFER/BULLNOSE CORNERS AT HOLLOW METAL DOOR OPENING OR WHERE CMU WALLS INTERSECT CONCRETE WALLS OR COLUMNS. SEE CONCRETE AND CMU OPENING DETAILS INCLUDING DOOR, WINDOW, LOUVER, GAS PROP EQUIPMENT, AND SCUPPER DETAILS FOR DIRECTION ON BULLNOSEING AND CHAMFERING.
 - H. SEE SHEET DT803 FOR DOOR DETAILS & SHEETS DT805 FOR WINDOW DETAILS. AT DOORWAYS WITHOUT DOORS, PROVIDE FULL HEIGHT MASONRY OPENING WITH NO LINTEL.
 - I. SEE GENERAL NOTES AND SHEET DT001 FOR THERMAL LINING SYSTEM INFORMATION.
 - J. LIVE FIRE TRAINING IS ONLY ALLOWED AT THE GAS BURN TRAINERS IN ROOM 104, AND IN FUTURE BURN ROOMS 102 AND 105 ONLY AFTER A GAS TRAINER AND THERMAL LININGS HAVE BEEN INSTALLED. NO LIVE FIRE TRAINING IS ALLOWED ELSEWHERE IN THE FIRST FLOOR, INCLUDING IN THE INTERIOR & EXTERIOR STAIRS.
 - K. ST @ 11" = 7'-4", 9R @ 6 3/4" = 5'-1" FROM GROUND TO INTERMEDIATE LANDING ABOVE, PROVIDE EQUAL RISER HEIGHTS WITH EACH FLIGHT.
 - L. 1T @ 11" = 15'-7", 16R @ 6 13/16" = 10'-2 3/4" (FIELD VERIFY) FROM GROUND TO SECOND FLOOR ABOVE.
 - M. ST @ 11" = 7'-4", 9R @ 7'-2" = 2'-3 3/4" FROM SECOND FLOOR LANDING DOWN TO FIRST INTERMEDIATE LANDING AND FROM SECOND FLOOR LANDING UP TO SECOND INTERMEDIATE LANDING. PROVIDE EQUAL RISER HEIGHTS WITH EACH FLIGHT.
 - N. PROVIDE "CRICKETS" IN TOP SURFACE OF SLAB, INTEGRAL WITH SLAB (NOT A TOPPING) WITH A NON-SLOPING RIDGE TO ACHIEVE GRADUAL, POSITIVE DRAINAGE TOWARDS SCUPPERS AND DOORS AT LOCATIONS SHOWN IN PLANS AS: MAXIMUM SLOPE OF CRICKETS BETWEEN NON-SLOPING RIDGE AND SCUPPER OR DOOR = 1/4" INCH PER FOOT AND MINIMUM SLOPE = 1/8" INCH PER FOOT.

- KEYED NOTES:**
- 1 SCUPPERS PER DET0762 (11 THUS).
 - 2 HANDRAIL PER DETAIL 10T606.
 - 3 FIXED GUARDRAIL AND HANDRAIL PER DETAIL 60T606.
 - 4 F.C.C. & DRY STANDOFF WITH 2 1/2" VALVE PER MEP DRAWINGS.
 - 5 EDGE OF SECOND FLOOR SLAB ABOVE.
 - 6 ROLL-UP DOOR PER DOOR SCHEDULE ON SHEET DT803.
 - 7 KITCHEN STOVE GAS TRAINER BY (BASE B90).
 - 8 NOT USED.
 - 9 SOFA GAS TRAINER BY (FUTURE).
 - 10 PROVIDE THERMAL LINING SYSTEM ON CEILING ABOVE GAS TRAINER FOR ENTIRE ROOM.
 - 11 PROVIDE THERMAL LINING SYSTEM ON WALLS/COLUMNS (FULL HEIGHT) ADJACENT TO GAS BURN TRAINER FOR EXTENTS INDICATED ON PLAN.
 - 12 PROVIDE 2'-0" (W) x 2'-2" (H) OPENING WITH BOTTOM OF OPENING AT 1'-4" ABOVE TOP OF FLOOR SLAB FOR FUTURE FRESH AIR INTAKE LOUVER. AT LOCATION INDICATED ON PLAN, PROVIDE LINTEL ABOVE OPENING, AND VERTICAL REINFORCING IN EACH JAMB AS INDICATED IN DETAIL 20T601. INFILL OPENING WITH CMU TO MATCH ADJACENT CMU, TO CREATE A KNOCKOUT PANEL FOR FUTURE EXHAUST DUCT INSTALLATION.
 - 13 FUTURE THERMAL LINING SYSTEM ON CEILING ABOVE GAS TRAINER FOR ENTIRE ROOM.
 - 14 FUTURE THERMAL LINING SYSTEM ON WALLS/COLUMNS (FULL HEIGHT) ADJACENT TO GAS BURN TRAINER FOR EXTENTS INDICATED ON PLAN.
 - 15 PROVIDE PORTABLE, HAND-CARRIED FIRE EXTINGUISHER IN EQUIPMENT ROOM.
 - 16 FLOOR DRAIN PER PLUMBING DRAWINGS.
 - 17 DOWNSPOUT PER DETAILS ON SHEET DT602 (10 THUS).
 - 18 VERTICAL DRAIN RISER PER PUMPING DRAWINGS.
 - 19 FUTURE + PROVIDE TWO COATS OF MASTERPROTECT H 1000 ON BACK FACE OF LINED INTERIOR WALLS AT LOCATIONS INDICATED IN PLAN. EXTEND MASTERPROTECT H 1000 1'-4" PAST END OF LINING, AT WALL CORNERS WITH LINING ON BACK SIDE OF WALL. APPLY MASTERPROTECT H 1000 FOR 1'-4" ON INTERSECTING WALL PER SPECIFICATION 04200.
 - 20 PROVIDE 8" (W) x 8" (H) OPENING AT BASE OF WALL FOR DRAINAGE PER DETAIL 30T602.
 - 21 FIXED GUARDRAIL AND HANDRAIL PER DETAIL 10T604.
 - 22 MASONRY C.J. PER DETAIL 50T601.
 - 23 PROVIDE 1'-6" (W) x 1'-4" (H) OPENING WITH TOP OF OPENING AT 9" BELOW BOTTOM OF CEILING SLAB FOR GAS TRAINER EXHAUST FAN DUCT AT LOCATION INDICATED IN PLAN. PROVIDE LINTEL ABOVE OPENING, SOLID MASONRY FIRST COURSE BELOW OPENING, AND VERTICAL REINFORCING AT EACH JAMB AS INDICATED IN DETAIL 20T601. INFILL OPENING WITH CMU TO MATCH ADJACENT CMU, TO CREATE A KNOCKOUT PANEL FOR FUTURE EXHAUST DUCT INSTALLATION.
 - 24 PROVIDE 1'-6" (W) x 1'-4" (H) OPENING WITH TOP OF OPENING AT 9" BELOW BOTTOM OF CEILING SLAB FOR GAS TRAINER EXHAUST FAN DUCT AT LOCATION INDICATED IN PLAN AND ELEVATION 20T603. PROVIDE LINTEL ABOVE OPENING, AND VERTICAL REINFORCING IN EACH JAMB AS INDICATED IN DETAIL 20T601.
 - 25 PROVIDE 2'-0" (W) x 2'-0" (H) OPENING WITH BOTTOM OF OPENING AT 1'-4" ABOVE TOP OF FINISHED FLOOR FOR GAS PROP SMOKE AT LOCATION INDICATED ON PLAN AND ELEVATION 20T606. PROVIDE LINTEL ABOVE OPENING, AND VERTICAL REINFORCING IN EACH JAMB AS INDICATED IN DETAIL 20T601.
 - 26 PROVIDE 6" (W) x 6" (H) OPENING WITH BOTTOM OF OPENING AT 1'-0" IN ROOM 103 & 4'-0" IN ROOM 106A ABOVE TOP OF FINISHED FLOOR FOR GAS PROP SMOKE AT LOCATION INDICATED ON PLAN AND ELEVATIONS 1 & 20T607. PROVIDE LINTEL ABOVE OPENING, AND VERTICAL REINFORCING IN EACH JAMB AS INDICATED IN DETAIL 20T601. INFILL OPENING WITH CMU TO MATCH ADJACENT CMU, TO CREATE A KNOCKOUT PANEL FOR FUTURE EXHAUST DUCT INSTALLATION.
 - 27 PROVIDE 6" (W) x 6" (H) OPENING WITH BOTTOM OF OPENING AT 8" ABOVE TOP OF FINISHED FLOOR FOR GAS PROP SPEAKER AT LOCATION INDICATED ON PLAN AND ELEVATION 20T605. PROVIDE LINTEL ABOVE OPENING, AND VERTICAL REINFORCING IN EACH JAMB AS INDICATED IN DETAIL 20T601. INFILL OPENING WITH CMU TO MATCH ADJACENT CMU, TO CREATE A KNOCKOUT PANEL FOR FUTURE EXHAUST DUCT INSTALLATION.
 - 28 PROVIDE 1'-1" (W) x 1'-0" (H) OPENING WITH BOTTOM OF OPENING AT 8" ABOVE TOP OF FINISHED FLOOR FOR GAS PROP EQUIPMENT AT LOCATION INDICATED ON PLAN AND ELEVATION 10T607 & 30T607. PROVIDE LINTEL ABOVE OPENING, AND VERTICAL REINFORCING IN EACH JAMB AS INDICATED IN DETAIL 20T601. INFILL OPENING WITH CMU TO MATCH ADJACENT CMU, TO CREATE A KNOCKOUT PANEL FOR FUTURE EXHAUST DUCT INSTALLATION.
 - 29 PROVIDE 1/2" DIA. NPT S.S. PIPE THAT PROTRUDES 2" PAST THE WALL FACE ON EA. SIDE OF WALL PER LOCATIONS INDICATED ON ELEVATIONS 10T607, 20T607, & 20T606.
 - 30 FUTURE SQUARE COR-TEN STEEL DUCT TO CONNECT OPENING TO EXHAUST FAN PER MEP DRAWINGS.
 - 31 PROVIDE OPENING IN SLAB ABOVE FOR VENTILATION THROUGH ROOF.
 - 32 PROVIDE 2'-0" (W) x 2'-2" (H) OPENING WITH BOTTOM OF OPENING AT 1'-4" ABOVE TOP OF FLOOR SLAB FOR FRESH AIR INTAKE LOUVER (PER MEP DRAWINGS) AT LOCATION INDICATED ON PLAN. PROVIDE LINTEL ABOVE OPENING, AND VERTICAL REINFORCING IN EACH JAMB AS INDICATED IN DETAIL 20T601.
 - 33 PROVIDE 1'-2" (W) x 1'-2" (H) OPENING WITH TOP OF OPENING AT 9" BELOW BOTTOM OF CEILING SLAB FOR GAS TRAINER EXHAUST FAN DUCT AT LOCATION INDICATED ON PLAN AND ELEVATION 20T608. PROVIDE LINTEL ABOVE OPENING, SOLID MASONRY FIRST COURSE BELOW OPENING, AND VERTICAL REINFORCING AT EACH JAMB AS INDICATED IN DETAIL 20T601.
 - 34 PROVIDE 2'-0" (W) x 2'-0" (H) OPENING WITH TOP OF OPENING AT 8" BELOW BOTTOM OF CEILING SLAB FOR FUTURE FRESH AIR INTAKE LOUVER. AT LOCATION INDICATED ON PLAN, PROVIDE LINTEL ABOVE OPENING, AND VERTICAL REINFORCING IN EACH JAMB AS INDICATED IN DETAIL 20T601. INFILL OPENING WITH CMU TO MATCH ADJACENT CMU, TO CREATE A KNOCKOUT PANEL FOR FUTURE EXHAUST DUCT INSTALLATION.
 - 35 FUTURE SQUARE COR-TEN STEEL DUCT TO CONNECT OPENINGS PER MECHANICAL DRAWINGS.
 - 36 PROVIDE PERMANENT S.S. OR PVC SCH. 40 PIPE SLEEVE THROUGH WALL AT 1'-6" A.F.F. THAT IS 1" LARGER THAN LP PIPE. NOTIFY ENGINEER IF THE SLEEVE IS TO BE LARGER THAN 6" DIAMETER.
 - 37 OPENING IN SLAB-ON-GRADE FOR GAS PROP EQUIPMENT.
 - 38 PROVIDE OPENING IN SLAB ABOVE.
 - 39 PROVIDE 1 1/2" DIA. PVC WEEP PIPE AT FLOOR LEVEL THROUGH WALL WITH INSECT SCREEN AT ROOM 106 SIDE OF PIPE.
 - 40 PROVIDE 1'-4" (W) x 1'-0" (H) OPENING WITH BOTTOM OF OPENING AT 8" ABOVE TOP OF FINISHED FLOOR FOR GAS PROP EQUIPMENT AT LOCATION INDICATED ON PLAN AND ELEVATION 20T608. PROVIDE LINTEL ABOVE OPENING, AND VERTICAL REINFORCING IN EACH JAMB AS INDICATED IN DETAIL 20T601.



COPYRIGHT 2024 FGM Architects, L.L.C. and FGM Architects, L.L.C. All Rights Reserved. THIS DRAWING IS THE PROPERTY OF FGM ARCHITECTS, L.L.C. AND IS NOT TO BE REPRODUCED OR TRANSMITTED IN ANY FORM OR BY ANY MEANS, ELECTRONIC OR MECHANICAL, INCLUDING PHOTOCOPYING, RECORDING, OR BY ANY INFORMATION STORAGE AND RETRIEVAL SYSTEM, WITHOUT THE WRITTEN PERMISSION OF FGM ARCHITECTS, L.L.C. THIS DRAWING IS THE PROPERTY OF FGM ARCHITECTS, L.L.C. AND IS NOT TO BE REPRODUCED OR TRANSMITTED IN ANY FORM OR BY ANY MEANS, ELECTRONIC OR MECHANICAL, INCLUDING PHOTOCOPYING, RECORDING, OR BY ANY INFORMATION STORAGE AND RETRIEVAL SYSTEM, WITHOUT THE WRITTEN PERMISSION OF FGM ARCHITECTS, L.L.C.

fgma
 FGM Architects Inc.
 1211 W 22nd St, Suite 700
 Oak Brook, Illinois 60523
 630.574.8300 office
 630.574.7070 fax
 ILLINOIS PROFESSIONAL DESIGN
 FIRM #164-00030

Elmer Lehner & McQueen P.C.
 800 Harbor Place, Suite 201
 Springfield, VA 22151
 Tel: 703.212.1100 Fax: 703.212.1111
 Illinois Exp. #2-Registration

ARCHITECTURE
 FGM Architects
 1211 W 22nd St, Suite 700
 Oak Brook, IL 60523
 Tel: 630.574.8300
 Fax: 630.574.7070

CIVIL/LANDSCAPING
 TERRA Engineering, Inc.
 1111 S. W. 10th St., Suite 100
 Ft. Lauderdale, FL 33304
 Tel: 954.575.1111
 Fax: 954.575.1112

MECHANICAL/ELECTRICAL/PLUMBING
 M&E Corp.
 1111 S. W. 10th St., Suite 100
 Ft. Lauderdale, FL 33304
 Tel: 954.575.1111
 Fax: 954.575.1112

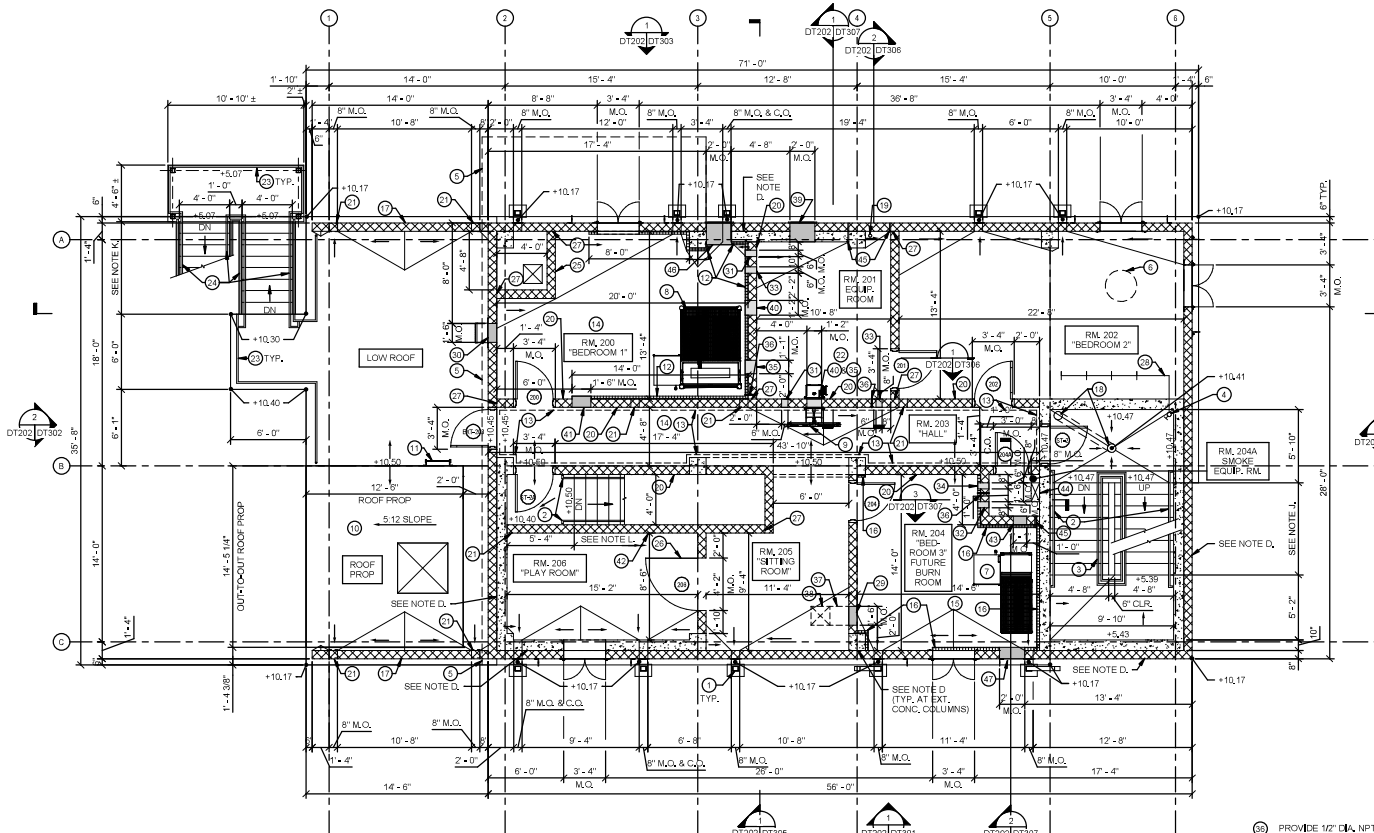
STRUCTURAL
 Elmer Lehner & McQueen
 800 Harbor Place, Suite 201
 Springfield, VA 22151
 Tel: 703.212.1100 Fax: 703.212.1111
 Illinois Exp. #2-Registration

ISSUANCE		
NO.	DATE	DESCRIPTION
1	10/01/2024	ISSUE FOR BIDS

Emergency Services Training Center
 William Rainey Harper College
 1200 W. Algonquin Road
 Palatine, IL 60067

FIRST FLOOR PLAN
 SHEET NO.
DT201
 JOB NO. 22-052-01
 © 2023 FGM ARCHITECTS INC.

100% CD ISSUANCE



NOTES

A. DIRECTION OF DOWNWARD SLOPE OF TOP OF CONCRETE IS INDICATED WITH

B. TOP OF FINISHED CONCRETE ELEVATION FOR THE BURN BUILDING SLABS IS INDICATED AS "X,XX" IN FEET ABOVE DATUM. SEE SHEET DT201 FOR DATUM.

C. ALL SINGLE-WYTHE MASONRY WALLS SHALL BE 8" THICK (NOMINAL), ALL CONCRETE WALLS SHALL BE 10" THICK (ACTUAL).

D. AT ALL LOCATIONS WHERE MASONRY WALLS ARE BACKED W/ CONC. WALLS OR COLUMNS, MASONRY WALLS SHALL BE TIGHT AGAINST CONCRETE WALLS & COLUMN FACES WITH A GAP BETWEEN THE TWO NOT EXCEEDING 3/8". CONNECT MASONRY TO CONCRETE PER GENERAL NOTE Q, 15 ON SHEET DT101.

E. PROVIDE (2) COATS OF MASONRY SEALER ON EXTERIOR FACES OF ALL EXTERIOR CMU WALLS PER GENERAL NOTES & SPECS.

F. PROVIDE BULLNOSE (CMU) OR CHAMFERED (CONCRETE) CORNERS AT JAMBS OF ALL WINDOW OPENINGS, AT ENDS OF WALLS THAT DO NOT INTERSECT OTHER WALLS, AND AT INTERIOR WALL CORNERS. DO NOT CHAMFER / BULLNOSE CORNERS AT HOLLOW METAL DOOR OPENING OR WHERE CMU WALLS INTERSECT CONCRETE WALLS OR COLUMNS, SEE CONCRETE AND CMU OPENING DETAILS INCLUDING DOORS, WINDOW Louvers, GAS PROP. EQUIPMENT, AND SCUPPER DETAILS. FOR DIRECTION ON BULLNOSE AND CHAMFERING.

G. SEE SHEET DT603 FOR DOOR DETAILS & SHEETS DT605 FOR WINDOW DETAILS, AT DOORWAYS WITHOUT DOORS, PROVIDE FULL-HEIGHT MASONRY OPENING WITH NO UNTEL.

H. DENOTES DOOR MARK ON PLAN, SEE DOOR SCHEDULE ON SHEET DT603 FOR DOORS.

I. SEE GENERAL NOTES AND SHEET DT601 FOR THERMAL LINING SYSTEM INFORMATION.

J. LIVE FIRE TRAINING IS ONLY ALLOWED AT THE GAS BURN TRAINERS IN ROOMS 200, 203, AND IN FUTURE BURN ROOM 204 (ONLY AFTER A GAS TRAINER AND THERMAL LININGS HAVE BEEN INSTALLED). NO LIVE FIRE TRAINING IS ALLOWED ELSEWHERE IN THE SECOND FLOOR, INCLUDING IN THE INTERIOR & EXTERIOR STAIRS, OR ON LOW ROOF.

K. 8T @ 11" ± 7" ± 4", 9R @ 6 3/4" ± 5" ± 1"± FROM SECOND FLOOR LANDING DOWN TO FIRST INTERMEDIATE LANDING AND 8T @ 11" ± 7" ± 4", 9R @ 6 3/4" ± 5" ± 0.78" ± FROM SECOND FLOOR LANDING UP TO SECOND INTERMEDIATE LANDING, PROVIDE EQUAL RISER HEIGHTS WITHIN EACH FLIGHT.

L. 17T @ 11" ± 7" ± 4", 18R @ 7" ± 5" ± 2.34"± FROM SECOND FLOOR DOWN TO INTERMEDIATE LANDING BELOW, PROVIDE EQUAL RISER HEIGHTS WITHIN EACH FLIGHT.

M. PROVIDE "CRICKETS" IN TOP SURFACE OF SLAB, INTEGRAL WITH SLAB (NOT A TOPPING) WITH A NON-SLOPING RIDGE TO ACHIEVE GRADUAL, POSITIVE DRAINAGE TOWARDS SCUPPERS AND DOORS AT LOCATIONS SHOWN IN PLANS AS . MAXIMUM SLOPE OF CRICKETS BETWEEN NON-SLOPING RIDGE AND SCUPPER OR DOOR = 1/8" INCH PER FOOT AND MINIMUM SLOPE = 1/8" INCH PER FOOT.

KEYED NOTES

- CONDUCTOR HEAD (10 THUS) AND DOWNSPOUT (10 THUS) PER DETAILS ON SHEET DT020.
- HANDRAIL PER DETAIL 1/DT060A.
- FIXED GUARDRAIL AND HANDRAIL PER DETAIL 6/DT060.
- DRY STANDPIPE WITH 2 1/2" VALVE PER MEP DRAWINGS.
- EDGE OF THIRD FLOOR SLAB ABOVE.
- MANHOLE OPENING ABOVE.
- TWIN BED FIRE TRAINING (FUTURE).
- DOUBLE BED GAS TRAINER (BASE BID).
- HALL FLASHOVER TRAINER (BASE BID).
- SLOPED WOOD ROOF PROP PER DETAILS ON SHEET DT060.
- ACCESS LADDER PER GENERAL NOTE 1/DT102.
- PROVIDE THERMAL LINING SYSTEM ON WALLS/COLUMNS (FULL HEIGHT) ADJACENT TO GAS BURN TRAINER FOR EXTENTS INDICATED ON PLAN.
- PROVIDE THERMAL LINING SYSTEM ON TOP 2'-0" OF WALLS/COLUMNS/BEAM FOR EXTENTS INDICATED ON PLANS.
- PROVIDE THERMAL LINING SYSTEM ON CEILING ABOVE GAS TRAINER FOR ENTIRE ROOM.
- FUTURE THERMAL LINING SYSTEM ON CEILING ABOVE GAS TRAINER FOR ENTIRE ROOM.
- FUTURE THERMAL LINING SYSTEM ON WALLS/COLUMNS (FULL HEIGHT) ADJACENT TO GAS BURN TRAINER FOR EXTENTS INDICATED ON PLAN.
- CMU PARAPET PER DETAIL 4/DT061.
- VERTICAL DRAIN RISER AND FLOOR DRAIN PER PLUMBING DRAWINGS, TIE FLOOR DRAIN INTO VERTICAL DRAIN IN BELOW SLAB PER PLUMBING DRAWINGS.
- GAS RISER PER MEP DRAWINGS.
- PROVIDE TWO COATS OF MASTERPROTECT H 1000 ON BACK FACE OF UNFINISHED INTERIOR WALLS AT LOCATIONS INDICATED IN PLAN, EXTEND MASTERPROTECT H 1000 1'-0" PAST END OF JOINTS, AT WALL CORNERS WITH LINING ON BACK SIDE OF WALL, APPLY MASTERPROTECT H 1000 FOR 1'-0" ON INTERSECTING WALL PER SPECIFICATION Q2000.
- PROVIDE 9" (W) x 8" (H) OPENING AT BASE OF WALL FOR DRAINAGE PER DETAIL 3/DT020.

TRUE
NORTH

PLAN
NORTH

SCALE 1/4" = 1'-0"
DT202/DT302

SECOND FLOOR PLAN

- PROVIDE PORTABLE, HAND-CARRIED FIRE EXTINGUISHER IN EQUIPMENT ROOM.
- FIXED GUARDRAIL PER DETAIL 1/DT060A.
- FIXED GUARDRAIL AND HANDRAIL PER DETAIL 1/DT060A.
- CMU CHASE WORKINGS IN SLABS ABOVE & BELOW FOR FUTURE VENTILATION THROUGH ROOF.
- FORBIDDEN ENTRY DOOR PER DETAILS ON SHEET DT604.
- MASONRY C.J. PER DETAIL 5/DT061.
- SPRINKLER LAB PER MEP DRAWINGS.
- PROVIDE 1'-8" (W) x 1'-4" (H) OPENING WITH TOP OF OPENING AT 9' BELOW BOTTOM OF CEILING SLAB FOR GAS TRAINER EXHAUST FAN DUCT AT LOCATION INDICATED IN PLAN, PROVIDE UNTEL ABOVE OPENING, SOLID MASONRY FIRST COURSE BELOW OPENING, AND VERTICAL REINFORCING AT EACH JAMB AS INDICATED IN DETAIL 2/DT061.
- PROVIDE 1'-8" (W) x 1'-4" (H) OPENING WITH TOP OF OPENING AT 9' BELOW BOTTOM OF CEILING SLAB FOR GAS TRAINER EXHAUST FAN AT LOCATION INDICATED IN PLAN, PROVIDE UNTEL ABOVE OPENING, SOLID MASONRY FIRST COURSE BELOW OPENING, AND VERTICAL REINFORCING AT EACH JAMB AS INDICATED IN DETAIL 2/DT061.
- PROVIDE 1'-6" (W) x 1'-4" (H) OPENING WITH TOP OF OPENING AT 9' BELOW BOTTOM OF CEILING SLAB FOR GAS TRAINER EXHAUST FAN AT LOCATION INDICATED IN PLAN, PROVIDE UNTEL ABOVE OPENING, SOLID MASONRY FIRST COURSE BELOW OPENING, AND VERTICAL REINFORCING AT EACH JAMB AS INDICATED IN DETAIL 2/DT061.
- PROVIDE 6" (W) x 8" (H) OPENING WITH TOP OF OPENING AT 1'-0" ABOVE TOP OF FINISHED FLOOR FOR GAS PROP SMOKE AT LOCATION INDICATED ON PLAN AND ELEVATION 10/200 & 10/207. PROVIDE UNTEL ABOVE OPENING, AND VERTICAL REINFORCING IN EACH JAMB AS INDICATED IN DETAIL 2/DT061.
- PROVIDE 6" (W) x 8" (H) OPENING WITH TOP OF OPENING AT 4'-0" ABOVE TOP OF FINISHED FLOOR FOR GAS PROP SMOKE AT LOCATION INDICATED ON PLAN AND ELEVATION 10/200 & 10/207. PROVIDE UNTEL ABOVE OPENING, AND VERTICAL REINFORCING IN EACH JAMB AS INDICATED IN DETAIL 2/DT061.
- PROVIDE 6" (W) x 8" (H) OPENING WITH BOTTOM OF OPENING AT 4'-0" ABOVE TOP OF FINISHED FLOOR FOR GAS PROP SMOKE AT LOCATION INDICATED ON PLAN AND ELEVATION 10/200 & 10/207. PROVIDE UNTEL ABOVE OPENING, AND VERTICAL REINFORCING IN EACH JAMB AS INDICATED IN DETAIL 2/DT061.
- PROVIDE 6" (W) x 8" (H) OPENING WITH BOTTOM OF OPENING AT 8' ABOVE TOP OF FINISHED FLOOR FOR GAS PROP SMOKE AT LOCATION INDICATED ON PLAN AND ELEVATION 10/200 & 10/207. PROVIDE UNTEL ABOVE OPENING, AND VERTICAL REINFORCING IN EACH JAMB AS INDICATED IN DETAIL 2/DT061.
- PROVIDE 6" (W) x 8" (H) OPENING WITH BOTTOM OF OPENING AT 8' ABOVE TOP OF FINISHED FLOOR FOR GAS PROP SMOKE AT LOCATION INDICATED ON PLAN AND ELEVATION 10/200 & 10/207. PROVIDE UNTEL ABOVE OPENING, AND VERTICAL REINFORCING IN EACH JAMB AS INDICATED IN DETAIL 2/DT061.
- PROVIDE 6" (W) x 8" (H) OPENING WITH BOTTOM OF OPENING AT 8' ABOVE TOP OF FINISHED FLOOR FOR GAS PROP SMOKE AT LOCATION INDICATED ON PLAN AND ELEVATION 10/200 & 10/207. PROVIDE UNTEL ABOVE OPENING, AND VERTICAL REINFORCING IN EACH JAMB AS INDICATED IN DETAIL 2/DT061.
- PROVIDE 6" (W) x 8" (H) OPENING WITH BOTTOM OF OPENING AT 8' ABOVE TOP OF FINISHED FLOOR FOR GAS PROP SMOKE AT LOCATION INDICATED ON PLAN AND ELEVATION 10/200 & 10/207. PROVIDE UNTEL ABOVE OPENING, AND VERTICAL REINFORCING IN EACH JAMB AS INDICATED IN DETAIL 2/DT061.
- PROVIDE 1'-1" (W) x 1'-5" (H) OPENING WITH TOP OF OPENING AT 1'-4" ABOVE TOP OF FINISHED FLOOR FOR FUTURE FRESH AIR INTAKE LOUVER, AT LOCATION INDICATED ON PLAN AND ELEVATION 10/206. PROVIDE UNTEL ABOVE OPENING, AND VERTICAL REINFORCING AT EACH JAMB AS INDICATED IN DETAIL 2/DT061.
- PROVIDE 1'-4" (W) x 1'-6" (H) OPENING WITH TOP OF OPENING AT 9' BELOW BOTTOM OF CEILING SLAB FOR GAS TRAINER EXHAUST AT LOCATION INDICATED IN PLAN, PROVIDE UNTEL ABOVE OPENING, SOLID MASONRY FIRST COURSE BELOW OPENING, AND VERTICAL REINFORCING AT EACH JAMB AS INDICATED IN DETAIL 2/DT061.
- 8" x 1'-6" CONCRETE OPENING IN FLOOR WITH DUCT PER DETAIL 1/DT064.
- PROVIDE 1'-0" DIA. PVC WEEP PIPE, WITH INVERT AT TOP OF FLOOR SLAB, THROUGH WALL WITH S.S. INSECT SCREEN AT EXT. FACE.
- PROVIDE 2'-0" (W) x 2'-8" (H) OPENING WITH BOTTOM OF OPENING AT 1'-4" ABOVE TOP OF FINISHED FLOOR FOR FRESH AIR INTAKE LOUVER (PER MEP DRAWINGS) AT LOCATION INDICATED ON PLAN, PROVIDE UNTEL ABOVE OPENING, AND VERTICAL REINFORCING IN EACH JAMB AS INDICATED IN DETAIL 2/DT061.
- PROVIDE 2'-0" (W) x 2'-8" (H) OPENING WITH BOTTOM OF OPENING AT 1'-4" ABOVE TOP OF FINISHED FLOOR FOR FRESH AIR INTAKE LOUVER (PER MEP DRAWINGS) AT LOCATION INDICATED ON PLAN, PROVIDE UNTEL ABOVE OPENING, AND VERTICAL REINFORCING IN EACH JAMB AS INDICATED IN DETAIL 2/DT061.
- PROVIDE 1'-1" (W) x 1'-5" (H) OPENING WITH TOP OF OPENING AT 1'-4" ABOVE TOP OF FINISHED FLOOR FOR FUTURE FRESH AIR INTAKE LOUVER, AT LOCATION INDICATED ON PLAN AND ELEVATION 10/206. PROVIDE UNTEL ABOVE OPENING, AND VERTICAL REINFORCING AT EACH JAMB AS INDICATED IN DETAIL 2/DT061.



FGM Architects Inc.
 1211 W 22nd St, Suite 700
 Oak Brook, Illinois 60523
 630.574.8300 office
 630.574.7070 fax
 ILLINOIS PROFESSIONAL DESIGN
 FIRM #164-00050

1001 E. Lefford & Madison, P.C.
 1000 E. Lefford Plaza, Suite 201
 Newmarket, VA 22111
 Tel. 703-431-2100 Fax. 703-431-0111
 Illinois Exp. P.E. Registration
 No. 0637878

ARCHITECTURE
 FGM Architects
 1211 W. 22nd St., Suite 700
 Oak Brook, IL 60523
 Tel: 630.574.8300
 Fax: 630.574.7070
 www.fgma.com

CIVIL/LANDSCAPING
 TERMA Engineering, Inc.
 6111 E. University Ave., Suite 101
 Oak Brook, IL 60521
 Tel: 630.574.8300
 Fax: 630.574.7070
 www.terma.com

MECHANICAL/ELECTRICAL/PLUMBING
 M&E Corp.
 1001 E. Lefford & Madison, Suite 201
 Newmarket, VA 22111
 Tel: 703.431.2100
 Fax: 703.431.0111
 www.mecorp.com

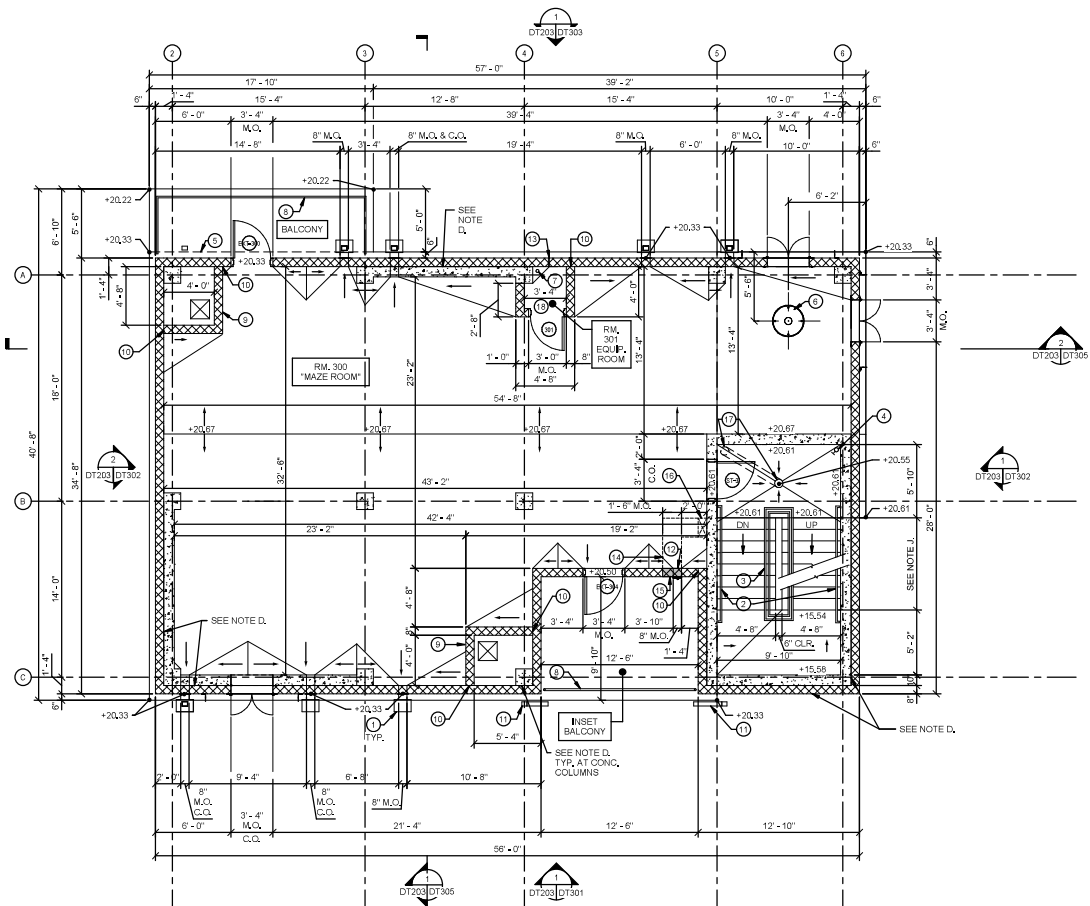
STRUCTURAL
 Ghilardi, Lefford & Madison
 1001 E. Lefford & Madison, Suite 201
 Newmarket, VA 22111
 Tel: 703.431.2100
 Fax: 703.431.0111
 www.gilm.com

ISSUANCE

NO	DATE	DESCRIPTION
1	10/10/24	ISSUE FOR BIDS

Emergency Services Training Center
 William Rainey Harper College
 1200 W. Algonquin Road
 Palatine, IL 60067
 100% CD ISSUANCE

SHEET NO.
DT202
 JOB NO. 23-054-D
 © 2023 FGM Architects, Inc.



NOTES:

- A. DIRECTION OF DOWNWARD SLOPE OF TOP OF CONCRETE IS INDICATED WITH .
- B. TOP OF FINISHED CONCRETE ELEVATION FOR THE BURN BUILDING SLABS IS INDICATED AS 'XXX' IN FEET ABOVE DATUM. SEE SHEET DT201 FOR DATUM.
- C. ALL SINGLE-WALL MASONRY WALLS SHALL BE 8" THICK (NOMINAL), ALL CONCRETE WALLS SHALL BE 10" THICK (ACTUAL).
- D. AT ALL LOCATIONS WHERE MASONRY WALLS ARE BACKED W/ CONC. WALLS OR COLUMNS, MASONRY WALLS SHALL BE TIGHT AGAINST CONCRETE WALLS & COLUMN FACES WITH A GAP BETWEEN THE TWO NOT EXCEEDING 3/8". CONNECT MASONRY TO CONCRETE PER GENERAL NOTE C.15 ON SHEET DT101.
- E. PROVIDE (2) COATS OF MASONRY SEALER ON EXTERIOR FACES OF ALL EXTERIOR CMU WALLS PER GENERAL NOTES & SPECS.
- F. PROVIDE BULLNOSED (CMU) OR CHAMFERED (CONCRETE) CORNERS AT JAMBS OF ALL WINDOW OPENINGS, AT ENDS OF WALLS THAT DO NOT INTERSECT OTHER WALLS, AND AT INTERIOR WALL CORNERS. DO NOT CHAMFER / BULLNOSE CORNERS AT HOLLOW METAL DOOR OPENING OR WHERE CMU WALLS INTERSECT CONCRETE WALLS OR COLUMNS, SEE CONCRETE AND CMU OPENING DETAILS, INCLUDING DOOR, WINDOW, LOUVER, GAS PROP EQUIPMENT, AND SCUPPER DETAILS FOR DIRECTION ON BULLNOSEING AND CHAMFERING.
- G. SEE SHEET DT603 FOR DOOR DETAILS & SHEETS DT605 FOR WINDOW DETAILS.
 DENOTES DOOR MARK ON PLAN. SEE DOOR SCHEDULE ON SHEET DT603 FOR DOORS.
- H. SEE GENERAL NOTES AND SHEET DT601 FOR THERMAL LINING SYSTEM INFORMATION.
- I. LIVE FIRE TRAINING IS ONLY ALLOWED AT THE FUTURE GAS BURN TRAINERS IN FUTURE BURN ROOM 300 (ONLY AFTER A GAS TRAINER AND THERMAL LINKS HAVE BEEN INSTALLED). NO LIVE FIRE TRAINING IS ALLOWED ELSEWHERE IN THE THIRD FLOOR INCLUDING IN THE INTERIOR & EXTERIOR STAIRS, OR ON THE BALCONIES, OR ON THE ROOFS.
- J. 8T @ 11" = 7'-4" SPR @ 3/4" = 5'-0 7/8" FROM THIRD FLOOR LANDING DOWN TO SECOND INTERMEDIATE LANDING AND DT @ 11" = 7'-4" SPR @ 3/4" = 5'-1" FROM THIRD FLOOR LANDING UP TO THIRD INTERMEDIATE LANDING. PROVIDE EQUAL RISER HEIGHTS WITHIN EACH FLIGHT.
- K. PROVIDE "CRICKETS" IN TOP SURFACE OF SLAB, INTEGRAL WITH SLAB (NOT A TOPPING) WITH A NON-SLOPING RIDGE TO ACHIEVE GRADUAL POSITIVE DRAINAGE TOWARDS SCUPPERS AND DOORS AT LOCATIONS SHOWN IN PLANS AS MAXIMUM SLOPE OF CRICKETS BETWEEN NON-SLOPING RIDGE AND SCUPPER OR DOOR = 1/4 INCH PER FOOT AND MINIMUM SLOPE = 1/8 INCH PER FOOT.

KEYED NOTES:

- 1 CONDUCTOR HEAD (7 THUS) AND DOWNSPOT (10 THUS) PER DETAILS ON SHEET DT602.
- 2 HANDRAIL PER DETAIL 1/DT606.
- 3 FIXED GUARDRAIL, AND HANDRAIL PER DETAIL 6/DT606.
- 4 DRY STANDPIPE WITH 2 1/2" VALVE PER MEP DRAWINGS.
- 5 EDGE OF FOURTH FLOOR SLAB ABOVE.
- 6 MAIN-HOLE PER DETAIL 2/DT608.
- 7 GAS RISER PER MEP DRAWINGS.
- 8 FIXED GUARDRAIL PER DETAIL 2/DT606.
- 9 CMU CHASE W/OPENINGS IN SLABS ABOVE AND BELOW FOR FUTURE VENTILATION THROUGH ROOF.
- 10 MASONRY C.I. PER DETAIL 5/DT601.
- 11 SLOPING DOWNSPOT BETWEEN VERTICAL DOWNSPOT AND CONDUCTOR HEAD BELOW.
- 12 SCUPPER PER DETAIL 2A/DT602 (1 THUS).
- 13 PROVIDE 1" DIA. PVC WEEP PIPE WITH INVERT AT TOP OF FLOOR SLAB, THROUGH WALL WITH S.S. INSECT SCREEN AT EXT. FACE.
- 14 FUTURE SQUARE COR-TEN STEEL DUCT TO CONNECT OPENINGS PER MEP DRAWINGS.
- 15 PROVIDE 1'-6" (W) x 8" (H) OPENING WITH TOP OF OPENING AT 8" BELOW BOTTOM OF FLOOR SLAB ABOVE FOR FRESH AIR INTAKE LOUVER (PER MEP DRAWINGS), AT LOCATION INDICATED ON PLAN. PROVIDE INTEL ABOVE OPENING, AND VERTICAL REINFORCING BY EACH JAMB AS INDICATED IN DETAIL 2/DT601. INSECT OPENING WITH CMU TO MATCH ADJACENT CMU. TO CREATE A KNOCKOUT PANEL FOR FUTURE EXHAUST DUCT INSTALLATION.
- 16 OPENING ABOVE FOR GAS TRAINER COMBUSTION AIR DUCT.
- 17 VERTICAL DRAIN RISER AND FLOOR DRAIN PER PLUMBING DRAWINGS. THE FLOOR DRAIN INTO VERTICAL DRAIN PIPE BELOW SLAB PER PLUMBING DRAWINGS.
- 18 PROVIDE PORTABLE, HAND-CARRIED FIRE EXTINGUISHER IN EQUIPMENT ROOM.



© COPYRIGHT 2024 Eric, Lebonof & McPhain
 Eric, Lebonof & McPhain RETAINS ALL RIGHTS. ALL RIGHTS RESERVED TO THIS DRAWING. THIS DRAWING SHALL BE USED SOLELY WITH RESPECT TO THIS PROJECT. THIS DRAWING SHALL NOT BE USED BY OTHERS ON OTHER PROJECTS. FOR ADDITIONS TO THIS PROJECT, OR FOR COMPLETION OF THIS PROJECT BY OTHERS, EMAIL NO. 32623461

Emergency Services Training Center
 William Rainey Harper College
 1200 W Algonquin Road
 Palatine, IL 60067

THIRD FLOOR PLAN

SHEET NO.

DT203

JOB NO. 22-052-01
 © 2023 FGM Architects Inc.

fgma
 FGM Architects Inc.
 1211 W 22nd St, Suite 700
 Oak Brook, Illinois 60523
 630.574.8300 office
 630.574.7070 fax
 ILLINOIS PROFESSIONAL DESIGN
 FIRM #184-00030

Eric, Lebonof & McPhain, P.C.
 3804 Parker Place, Suite 201
 Springfield, VA 22151
 Tel: 703.712.1100 Fax: 703.712.2111
 Illinois, Ohio, P.E. Registration
 No. 0403789

ARCHITECTURE
 FGM Architects
 1211 W 22nd St, Suite 700
 Oak Brook, IL 60523
 Tel: 630.574.8300
 No. 0403789

CIVIL/LANDSCAPING
 TERA Engineering, Inc.
 114 S. Walnut St.
 Chicago, IL 60604
 Tel: 312.480.2000
 No. 0403789

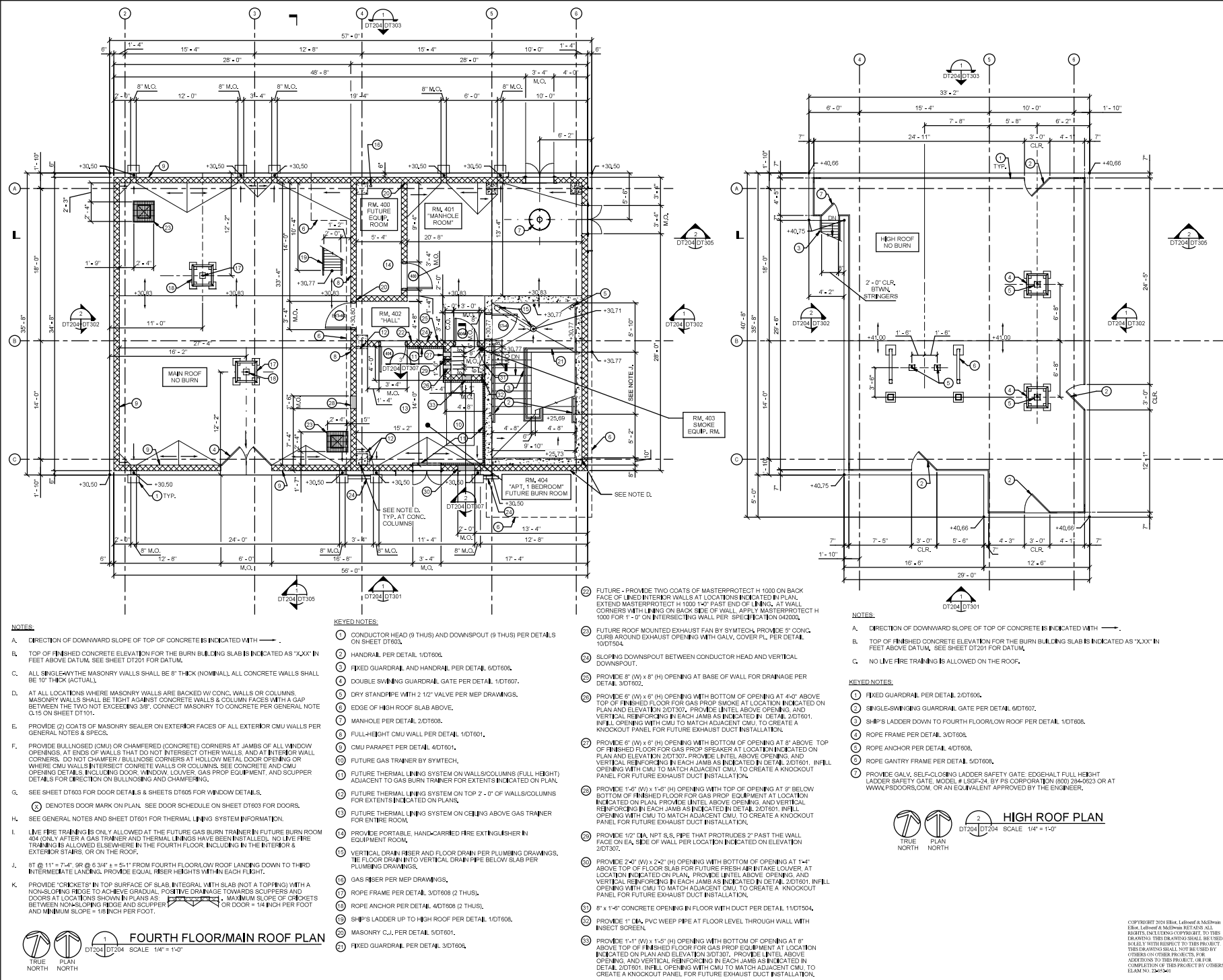
MECHANICAL/ELECTRICAL/PLUMBING
 M&M Corp.
 225 West Jackson Street, Suite 1200
 Chicago, IL 60604
 Tel: 312.424.3000
 No. 0403789

STRUCTURAL
 Eric, Lebonof & McPhain
 3804 Parker Place, Suite 201
 Springfield, VA 22151
 Tel: 703.712.1100
 P.E. Registration No. 0403789

ISSUANCE

NO.	DATE	DESCRIPTION
1	10/18/2024	ISSUE FOR BIDD

100% CD ISSUANCE



- NOTES:**
- A. DIRECTION OF DOWNWARD SLOPE OF TOP OF CONCRETE IS INDICATED WITH
 - B. TOP OF FINISHED CONCRETE ELEVATION FOR THE BURN BUILDING SLAB IS INDICATED AS 'XXX' IN FEET ABOVE DATUM. SEE SHEET DT201 FOR DATUM.
 - C. ALL SINGLE-WAY MASONRY WALLS SHALL BE 8" THICK (NOMINAL). ALL CONCRETE WALLS SHALL BE 10" THICK (ACTUAL).
 - D. AT ALL LOCATIONS WHERE MASONRY WALLS ARE BACKED W/ CONC. WALLS OR COLUMNS, MASONRY WALLS SHALL BE TIGHT AGAINST CONCRETE WALLS & COLUMN FACES WITH A GAP BETWEEN THE TWO NOT EXCEEDING 3/8". CONNECT MASONRY TO CONCRETE PER GENERAL NOTE C.15 ON SHEET DT101.
 - E. PROVIDE (2) COATS OF MASONRY SEALER ON EXTERIOR FACES OF ALL EXTERIOR CMU WALLS PER GENERAL NOTES & SPECS.
 - F. PROVIDE BULLNODGED (CMU) OR CHAMFERED (CONCRETE) CORNERS AT JAMBS OF ALL WINDOW OPENINGS. AT ENDS OF WALLS THAT DO NOT INTERSECT OTHER WALLS, AND AT INTERIOR WALL CORNERS, DO NOT CHAMFER (BULLNOD) CORNERS AT HOLLOW METAL DOOR OPENINGS OR WHERE CMU WALLS INTERSECT CONCRETE WALLS OR COLUMNS. SEE CONCRETE AND CMU OPENING DETAILS INCLUDING DOOR WINDOW, LOWER, GAS PROP. EQUIPMENT, AND SCUPPER DETAILS FOR DETAIL ON BULLNODS AND CHAMFERING.
 - G. SEE SHEET DT603 FOR DOOR DETAILS & SHEETS DT605 FOR WINDOW DETAILS.
 - H. DENOTES DOOR MARK ON PLAN. SEE DOOR SCHEDULE ON SHEET DT603 FOR DOORS. SEE GENERAL NOTES AND SHEET DT601 FOR THERMAL LINING SYSTEM INFORMATION.
 - I. LIVE FIRE TRAINING IS ONLY ALLOWED AT THE FUTURE GAS BURN TRAINER/FUTURE BURN ROOM 404 ONLY AFTER A GAS TRAINER AND THERMAL LININGS HAVE BEEN INSTALLED. NO LIVE FIRE TRAINING IS ALLOWED ELSEWHERE IN THE FOURTH FLOOR, INCLUDING IN THE INTERIOR & EXTERIOR STAIRS, OR ON THE ROOF.
 - J. ST @ 11" = 7'-4" SR @ 8'-3/4" ± = 5'-1" FROM FOURTH FLOOR/ROOF LANDING DOWN TO THIRD INTERMEDIATE LANDING. PROVIDE EQUAL RISER HEIGHTS WITHIN EACH FLIGHT.
 - K. PROVIDE 'CRICKETS' IN TOP SURFACE OF SLAB INTEGRAL WITH SLAB (NOT A TOPPING) WITH A NON-SLOPING RIDGE TO ACHIEVE GRADUAL POSITIVE DRAINAGE TOWARDS SCUPPERS AND DOORS AT LOCATIONS SHOWN IN PLANS AS . MAXIMUM SLOPE OF CRICKETS BETWEEN NON-SLOPING RIDGE AND SCUPPER OR DOOR = 1/4 INCH PER FOOT AND MINIMUM SLOPE = 1/8 INCH PER FOOT.
- KEYED NOTES:**
- 1 CONDUCTOR HEAD (8 THUS) AND DOWNSPOUT (8 THUS) PER DETAILS ON SHEET DT606.
 - 2 HANDRAIL PER DETAIL 1/DT606.
 - 3 FIXED GUARDRAIL AND HANDRAIL PER DETAIL 6/DT606.
 - 4 DOUBLE SWINGING GUARDRAIL GATE PER DETAIL 1/DT607.
 - 5 DRY STANDPIPE WITH 2 1/2" VALVE PER MEP DRAWINGS.
 - 6 EDGE OF HIGH ROOF SLAB ABOVE.
 - 7 MANHOLE PER DETAIL 2/DT606.
 - 8 FULL-HEIGHT CMU WALL PER DETAIL 1/DT601.
 - 9 CMU PARAPET PER DETAIL 4/DT601.
 - 10 FUTURE GAS TRAINER BY SYMTECH.
 - 11 FUTURE THERMAL LINING SYSTEM ON WALLS/COLUMNS (FULL HEIGHT) ADJACENT TO GAS BURN TRAINER FOR EXTENTS INDICATED ON PLAN.
 - 12 FUTURE THERMAL LINING SYSTEM ON TOP 2'-0" OF WALLS/COLUMNS FOR EXTENTS INDICATED ON PLAN.
 - 13 FUTURE THERMAL LINING SYSTEM ON CEILING ABOVE GAS TRAINER FOR ENTIRE ROOM.
 - 14 PROVIDE PORTABLE, HAND-CARRIED FIRE EXTINGUISHER IN EQUIPMENT ROOM.
 - 15 VERTICAL DRAIN RISER AND FLOOR DRAIN PER PLUMBING DRAWINGS. THE FLOOR DRAIN INTO VERTICAL DRAIN PIPE BELOW SLAB PER PLUMBING DRAWINGS.
 - 16 GAS RISER PER MEP DRAWINGS.
 - 17 ROPE FRAME PER DETAIL 3/DT608 (2 THUS).
 - 18 ROPE ANCHOR PER DETAIL 4/DT608 (2 THUS).
 - 19 SHIP'S LADDER UP TO HIGH ROOF PER DETAIL 1/DT608.
 - 20 MASONRY C.J. PER DETAIL 5/DT601.
 - 21 FIXED GUARDRAIL PER DETAIL 3/DT606.

- 22 FUTURE - PROVIDE TWO COATS OF MASTERPROTECT H 1000 ON BACK FACE OF LINED INTERIOR WALLS AT LOCATIONS INDICATED IN PLAN. EXTEND MASTERPROTECT H 1000 1'-0" PAST END OF LINING. AT WALL CORNERS WITH LINING ON BACK SIDE OF WALL, APPLY MASTERPROTECT H 1000 FOR 1'-0" ON INTERSECTING WALL PER SPECIFICATION 042000.
- 23 FUTURE ROOF MOUNTED EXHAUST FAN BY SYMTECH. PROVIDE 5" CONC. CURB AROUND EXHAUST OPENING WITH GALV. COVER PL. PER DETAIL 1/DT604.
- 24 SLOPING DOWNSPOUT BETWEEN CONDUCTOR HEAD AND VERTICAL DOWNSPOUT.
- 25 PROVIDE 8" (W) x 8" (H) OPENING AT BASE OF WALL FOR DRAINAGE PER DETAIL 3/DT602.
- 26 PROVIDE 6" (W) x 8" (H) OPENING WITH BOTTOM OF OPENING AT 4'-0" ABOVE TOP OF FINISHED FLOOR FOR GAS PROP. SMOKE AT LOCATION INDICATED ON PLAN AND ELEVATION 2/DT607. PROVIDE UNTEL ABOVE OPENING AND VERTICAL REINFORCING IN EACH JAMB AS INDICATED IN DETAIL 2/DT601. INFILL OPENING WITH CMU TO MATCH ADJACENT CMU. TO CREATE A KNOCKOUT PANEL FOR FUTURE EXHAUST DUCT INSTALLATION.
- 27 PROVIDE 6" (W) x 6" (H) OPENING WITH TOP OF OPENING AT 8" ABOVE TOP OF FINISHED FLOOR FOR GAS PROP. EQUIPMENT AT LOCATION INDICATED ON PLAN AND ELEVATION 2/DT607. PROVIDE UNTEL ABOVE OPENING AND VERTICAL REINFORCING IN EACH JAMB AS INDICATED IN DETAIL 2/DT601. INFILL OPENING WITH CMU TO MATCH ADJACENT CMU. TO CREATE A KNOCKOUT PANEL FOR FUTURE EXHAUST DUCT INSTALLATION.
- 28 PROVIDE 1'-0" (W) x 1'-6" (H) OPENING WITH TOP OF OPENING AT 9" BELOW BOTTOM OF FINISHED FLOOR FOR GAS PROP. EQUIPMENT AT LOCATION INDICATED ON PLAN. PROVIDE UNTEL ABOVE OPENING AND VERTICAL REINFORCING IN EACH JAMB AS INDICATED IN DETAIL 2/DT601. INFILL OPENING WITH CMU TO MATCH ADJACENT CMU. TO CREATE A KNOCKOUT PANEL FOR FUTURE EXHAUST DUCT INSTALLATION.
- 29 PROVIDE 12" DIA. NPT S.S. PIPE THAT PROTRUDES 2" PAST THE WALL FACE ON EA. SIDE OF WALL PER LOCATION INDICATED ON ELEVATION 2/DT607.
- 30 PROVIDE 2'-0" (W) x 2'-2" (H) OPENING WITH BOTTOM OF OPENING AT 1'-4" ABOVE TOP OF FLOOR SLAB FOR FUTURE FRESH AIR INTAKE LOUVER. AT LOCATION INDICATED ON PLAN. PROVIDE UNTEL ABOVE OPENING AND VERTICAL REINFORCING IN EACH JAMB AS INDICATED IN DETAIL 2/DT601. INFILL OPENING WITH CMU TO MATCH ADJACENT CMU. TO CREATE A KNOCKOUT PANEL FOR FUTURE EXHAUST DUCT INSTALLATION.
- 31 8" x 1'-6" CONCRETE OPENING IN FLOOR WITH DUCT PER DETAIL 11/DT604.
- 32 PROVIDE 1" DIA. PVC WEEP PIPE AT FLOOR LEVEL THROUGH WALL WITH INSECT SCREEN.
- 33 PROVIDE 1'-1" (W) x 1'-5" (H) OPENING WITH BOTTOM OF OPENING AT 8" ABOVE TOP OF FINISHED FLOOR FOR GAS PROP. EQUIPMENT AT LOCATION INDICATED ON PLAN AND ELEVATION 2/DT607. PROVIDE UNTEL ABOVE OPENING AND VERTICAL REINFORCING IN EACH JAMB AS INDICATED IN DETAIL 2/DT601. INFILL OPENING WITH CMU TO MATCH ADJACENT CMU. TO CREATE A KNOCKOUT PANEL FOR FUTURE EXHAUST DUCT INSTALLATION.

- NOTES:**
- A. DIRECTION OF DOWNWARD SLOPE OF TOP OF CONCRETE IS INDICATED WITH
 - B. TOP OF FINISHED CONCRETE ELEVATION FOR THE BURN BUILDING SLAB IS INDICATED AS 'XXX' IN FEET ABOVE DATUM. SEE SHEET DT201 FOR DATUM.
 - C. NO LIVE FIRE TRAINING IS ALLOWED ON THE ROOF.
- KEYED NOTES:**
- 1 FIXED GUARDRAIL PER DETAIL 1/DT606.
 - 2 SINGLE-SWINGING GUARDRAIL GATE PER DETAIL 6/DT607.
 - 3 SHIP'S LADDER DOWN TO FOURTH FLOOR/ROOF PER DETAIL 1/DT608.
 - 4 ROPE FRAME PER DETAIL 3/DT608.
 - 5 ROPE ANCHOR PER DETAIL 4/DT608.
 - 6 ROPE GANTRY FRAME PER DETAIL 5/DT608.
 - 7 PROVIDE GALV. SELF-CLOSING LADDER SAFETY GATE. EDGEHALT FULL HEIGHT LADDER SAFETY GATE. MODEL # LSSP-24 BY PS CORPORATION (800) 284-9283 OR AT WWW.PSDOORS.COM, OR AN EQUIVALENT APPROVED BY THE ENGINEER.



fgma
 FGM Architects Inc.
 1211 W 22nd St, Suite 700
 Oak Brook, Illinois 60523
 630.574.8300 office
 630.574.7070 fax
 ILLINOIS PROFESSIONAL DESIGN
 FIRM #184-00030

Client: Leiford & McEwen, P.C.
 8004 Parker Place, Suite 201
 Brentwood, VA 22111
 Tel: 703-424-1900 Fax: 703-421-0111
 Illinois Exp. # 06-1617

ARCHITECTURE
 FGM Architects
 1211 W 22nd St, Suite 700
 Oak Brook, IL 60523
 Tel: 630.574.8300
 Fax: 630.574.7070
 ILLINOIS PROFESSIONAL DESIGN
 FIRM #184-00030

CIVIL/LANDSCAPING
 TERA Engineering, Inc.
 1500 W. 22nd St., Suite 101
 Oak Brook, IL 60523
 Tel: 630.574.8300
 Fax: 630.574.7070
 ILLINOIS PROFESSIONAL DESIGN
 FIRM #184-00030

MECHANICAL/ELECTRICAL/PLUMBING
 M&E Corp.
 800 Parker Place, Suite 201
 Brentwood, VA 22111
 Tel: 703-424-1900
 Fax: 703-421-0111
 ILLINOIS PROFESSIONAL DESIGN
 FIRM #184-00030

STRUCTURAL
 Leiford & McEwen
 800 Parker Place, Suite 201
 Brentwood, VA 22111
 Tel: 703-424-1900
 Fax: 703-421-0111
 ILLINOIS PROFESSIONAL DESIGN
 FIRM #184-00030

ISSUANCE		
NO.	DATE	DESCRIPTION
1	10/01/2024	ISSUE FOR BIDD

Emergency Services Training Center
 William Rainey Harper College
 1200 W Algonquin Road
 Palatine, IL 60067

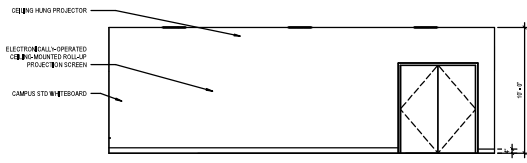
FOURTH FLOOR/MAIN ROOF & HIGH ROOF PLANS

SHEET NO. **DT204**

JOB NO. 22-051-01
 © 2023 FGM Architects Inc.

Copyright © 2024 FGM Architects Inc. Leiford & McEwen, P.C. and TERA Engineering, Inc. ALL RIGHTS RESERVED. THIS DRAWING IS THE PROPERTY OF FGM ARCHITECTS INC. AND SHALL BE USED ONLY WITH RESPECT TO THIS PROJECT. THIS DRAWING SHALL NOT BE USED BY OTHER PROJECTS FOR ANY PROJECTS WITHOUT THE WRITTEN PERMISSION OF FGM ARCHITECTS INC. OR TERA ENGINEERING, INC.

01/08/2024 11:53:37 AM
 22052-01 HARPER COLLEGE - 2022 - CENTRAL (user:charng@hmcnet.com)



SPECIALTY EQUIPMENT SCHEDULE	
Type Mark	Comments
EIC	SUBMIT SPECIFICATIONS TO EXTENSION CABINET

GENERAL FLOOR PLAN NOTES	
1.	REFER TO OWNER'S SHEETS FOR TYPICAL ABBREVIATIONS, SYMBOLS & TAGS.
2.	REFER TO SECTION TYPES FOR FINISHES OF WALLS AND PARTITIONS.
3.	WALL AND PARTITION DIMENSIONS ARE SHOWN TO THE FACE OF WALL.
4.	FINISHES FOR INTERIORS AND FINISHES FOR EXTERIORS ARE SHOWN ON UNFINISHED SCALE PLANS. SEE AS SHOWN ON DRAWINGS.
5.	UNLESS OTHERWISE NOTED, WALLS AND PARTITIONS WHICH ARE LINED OUT FULLY, ARE DIMENSIONED BY FROM THE NEAREST FINISH LINE.
6.	UNLESS OTHERWISE NOTED, WALLS AND PARTITIONS WHICH ARE SHOWN TO BE ON A CURVE OR IRREGULARLY NEXT TO A CURVE SHALL BE LOCATED PARALLEL WITH THE CURVE AND THE FACE OF THE WALL SHALL BE MEASURED FROM THE INSIDE OF THE CURVE. SEE AS SHOWN ON DRAWINGS.
7.	UNLESS OTHERWISE NOTED, WALL AND PARTITIONS WHICH ARE LINED OUT FULLY ALONG THE ESTABLISHED FACE, SHALL BE LINED OUT TO THE FACE OF THE WALL. MEASURE FROM THE INSIDE OF THE CURVE.
8.	UNLESS OTHERWISE NOTED, WALL AND PARTITIONS WHICH ARE LINED OUT FULLY ALONG THE ESTABLISHED FACE, SHALL BE LINED OUT TO THE FACE OF THE WALL. MEASURE FROM THE INSIDE OF THE CURVE.
9.	UNLESS OTHERWISE NOTED, WALL AND PARTITIONS WHICH ARE SHOWN TO BE ON A CURVE OR IRREGULARLY NEXT TO A CURVE SHALL BE LOCATED PARALLEL WITH THE CURVE AND THE FACE OF THE WALL SHALL BE MEASURED FROM THE INSIDE OF THE CURVE. SEE AS SHOWN ON DRAWINGS.
10.	FOR PARTITION TYPES, SEE AS SHOWN ON DRAWINGS.
11.	FOR CURVED PARTITION TYPES, SEE AS SHOWN ON DRAWINGS.
12.	FOR COOR AND FINISH INFORMATION, SEE AS SHOWN ON DRAWINGS.
13.	FOR FINISH AND SCHEDULE INFORMATION, SEE AS SHOWN ON FINISH SCHEDULES.
14.	FOR EXTERIOR FINISHES, SEE AS SHOWN ON FINISH SCHEDULES.
15.	FOR EXTERIOR FINISHES, SEE AS SHOWN ON FINISH SCHEDULES.
16.	FOR EXTERIOR FINISHES, SEE AS SHOWN ON FINISH SCHEDULES.
17.	FOR EXTERIOR FINISHES, SEE AS SHOWN ON FINISH SCHEDULES.
18.	FOR EXTERIOR FINISHES, SEE AS SHOWN ON FINISH SCHEDULES.
19.	FOR EXTERIOR FINISHES, SEE AS SHOWN ON FINISH SCHEDULES.
20.	FOR EXTERIOR FINISHES, SEE AS SHOWN ON FINISH SCHEDULES.
21.	FOR EXTERIOR FINISHES, SEE AS SHOWN ON FINISH SCHEDULES.
22.	FOR EXTERIOR FINISHES, SEE AS SHOWN ON FINISH SCHEDULES.

fgma
FGM Architects Inc.
550 W Van Buren, Suite 1420
Chicago, Illinois 60607
312.948.8462 fax
312.948.8462 fax
ILLINOIS PROFESSIONAL DESIGN FIRM #184-00039

ARCHITECT
FGM ARCHITECTS
200 North Dearborn Street
Chicago, IL 60610
Phone: 312.948.8462
Fax: 312.948.8462

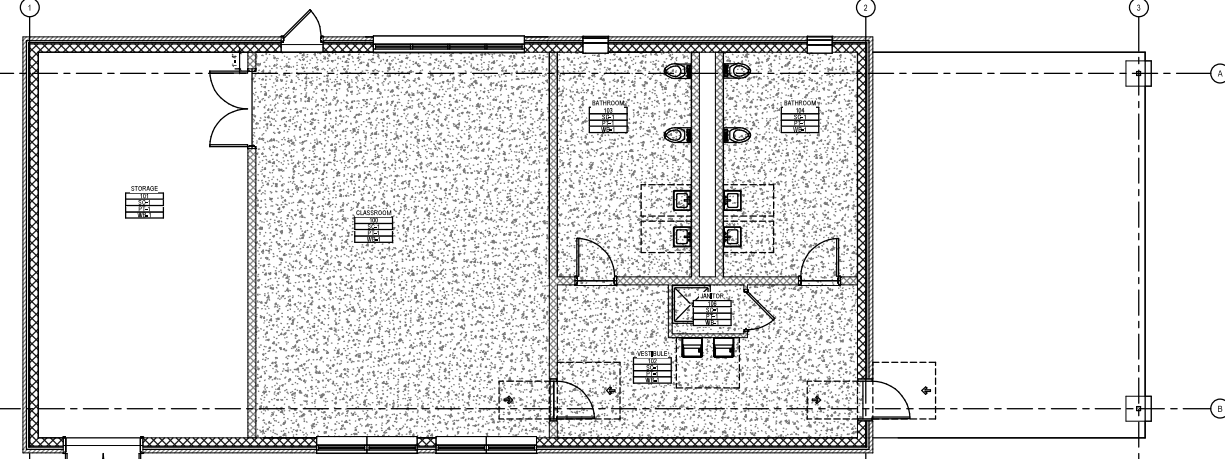
SPECIALTY STRUCTURAL
CHOI, LAROCHE & McDEVIN ASSOCIATES
1140 North Dearborn Street
Chicago, IL 60610
Phone: 312.948.8462

CIVIL/LANDSCAPING
TERESA ENGINEERING
1400 North Dearborn Street
Chicago, IL 60610
Phone: 312.948.8462

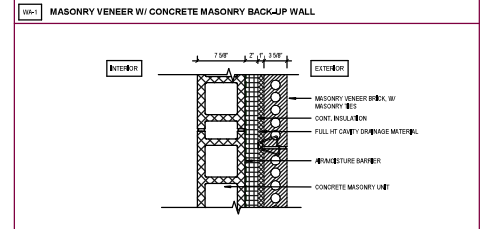
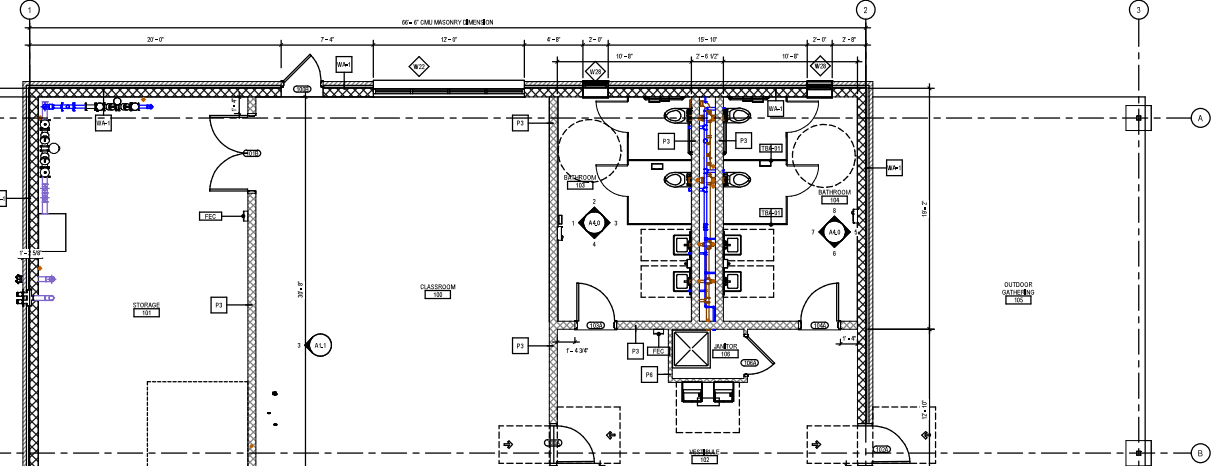
MEP
W&A
1400 North Dearborn Street
Chicago, IL 60610
Phone: 312.948.8462

STRUCTURAL
W&A
1400 North Dearborn Street
Chicago, IL 60610
Phone: 312.948.8462

ID	DATE	DESCRIPTION
01	10/01/2024	Issue for Bid



- | GENERAL PARTITION NOTES | |
|-------------------------|---|
| 1. | PARTITIONS SHALL EXTEND TO DECK OR STRUCTURE ABOVE UNLESS INDICATED BY SPECIAL CONDITION NOTES BELOW. |
| 2. | RESERVED. |
| 3. | RESERVED. |
| 4. | RESERVED. |
| 5. | RESERVED. |
| 6. | RESERVED. |
| 7. | RESERVED. |
| 8. | RESERVED. |
| 9. | RESERVED. |
| 10. | RESERVED. |
- TYPICAL PARTITIONING
- PARTITION SPECIAL CONDITIONS - SEE NOTE LEGEND BELOW
- PARTITION SPECIAL CONDITION NOTES
- NOTE: PARTITIONS SHALL EXTEND TO DECK OR STRUCTURE ABOVE UNLESS INDICATED BY SPECIAL CONDITION NOTES BELOW.
1. PARTITION HEIGHT TO EXTEND ABOVE CEILING UNLESS OTHERWISE NOTED.
2. PARTITION TOP FINISH TO FACE OF PARTITION UNLESS OTHERWISE NOTED.
3. TOP OF PARTITION TO EXTEND ABOVE FLOOR SLAB UNLESS OTHERWISE NOTED.
4. SLOPED OR STEPPED TOP OF PARTITION, REFER TO DETAILS.



WALL TYPE	TOTAL THICK	EXTERIOR FINISH MATERIAL THICK	INSULATION TYPE THICK	CONCRETE BACK-UP WALL THICK	WEIGHT VAPOR BARRIER	BLU-CELL BUILT UP STED	BULLET RESISTANT TYPE THICK	FINISHABLE REINFORCING BARS PER SQUARE YARD	FINISH RATING
MW-1	1'-1 1/2"	FBR 1 1/2"	CONV 2"	24" CMU 8"	AMB-1	CMU 8"	NA	-	1000

Q01169 Building Q
William Rainey Harper College
1200 West Algonquin Road
Palatine, IL 60067
ISSUE FOR BID

**CLASSROOM BUILDING
ALTERNATE - FLOOR PLANS**

SHEET NO. **A1.1**

JOB NO. 23 1651 02
© 2023 FGM ARCHITECTS INC.